

PLAP antibody

Catalog Number: 113939

Product name

PLAP antibody

IP: 1:200-1:2000

IHC: 1:20-1:200

Specificity

Human, Mouse; other species not tested.

Antibody description

PLAP Rabbit Polyclonal antibody. Positive IP detected in HepG2 cells. Positive WB detected in human placenta tissue, HepG2 cells, mouse liver tissue. Positive IHC detected in human placenta tissue, human ovary tumor tissue. Observed molecular weight by Western-blot: 66 kDa

Preparation

This antibody was obtained by immunization of PLAP recombinant protein (Accession Number: NM_001632). Purification method: Antigen affinity purified.

Formulation

PBS with 0.02% sodium azide and 50% glycerol pH 7.3.

Storage

Store at -20°C. DO NOT ALIQUOT

Clonality

Polyclonal

Ig Type

Rabbit IgG

Applications

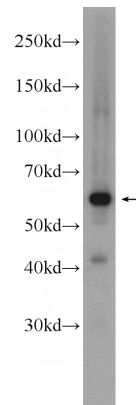
ELISA, IHC, WB, IP


Dilutions

Recommended Dilution:

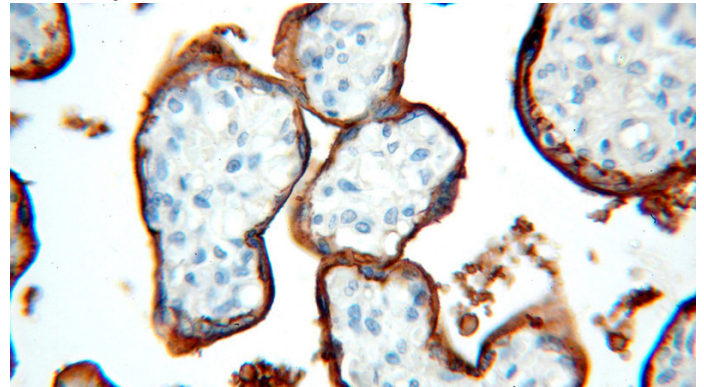
WB: 1:200-1:2000

Validations



human placenta tissue were subjected to SDS PAGE followed by western blot with Catalog No:113939(ALPP Antibody) at dilution of 1:600 

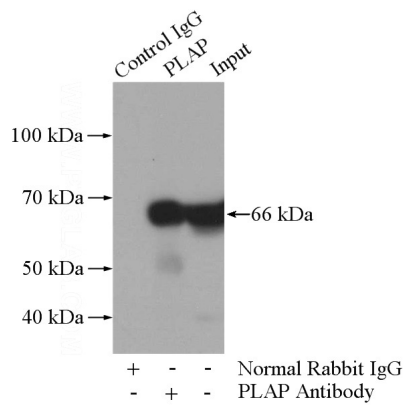
Immunohistochemical of paraffin-embedded human placenta using Catalog No:113939(ALPP antibody) at dilution of 1:100 (under 10x lens)



Immunohistochemical of paraffin-embedded human placenta using Catalog No:113939(ALPP antibody) at dilution of 1:100 (under 40x lens)

PLAP antibody

Catalog Number: 113939



IP Result of anti-ALPP (IP:Catalog No:113939, 4ug; Detection:Catalog No:113939 1:700) with HepG2 cells lysate 1800ug.