

# PLAG1 antibody



Catalog Number: 113935

## Product name

PLAG1 antibody

IP: 1:200-1:1000

IF: 1:50-1:500

## Specificity

Human, Mouse, Rat; other species not tested.

## Antibody description

PLAG1 Rabbit Polyclonal antibody. Positive IF detected in HepG2 cells. Positive IP detected in HepG2 cells. Positive WB detected in A431 cells, HepG2 cells. Observed molecular weight by Western-blot: 56-60 kDa

## Preparation

This antibody was obtained by immunization of PLAG1 recombinant protein (Accession Number: NM\_001114634). Purification method: Antigen affinity purified.

## Formulation

PBS with 0.1% sodium azide and 50% glycerol pH 7.3.

## Storage

Store at -20°C. DO NOT ALIQUOT

## Clonality

Polyclonal

## Ig Type

Rabbit IgG

## Applications

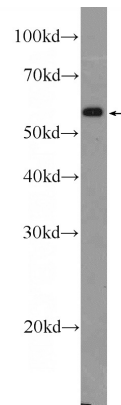
ELISA, WB, IP, IF

## Dilutions

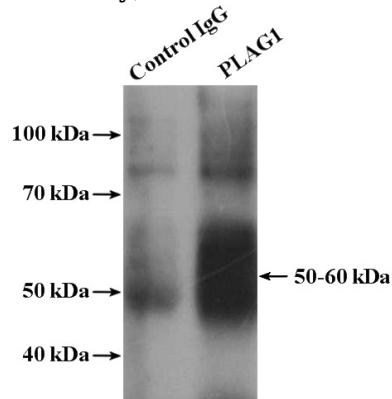
Recommended Dilution:

WB: 1:200-1:1000

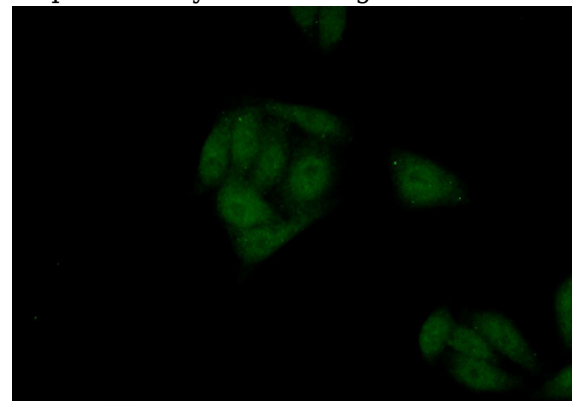
## Validations



A431 cells were subjected to SDS PAGE followed by western blot with Catalog No:113935(PLAG1 Antibody) at dilution of 1:300



IP Result of anti-PLAG1 (IP:Catalog No:113935, 4ug; Detection:Catalog No:113935 1:300) with HepG2 cells lysate 2400ug.



Immunofluorescent analysis of (10% Formaldehyde) fixed HepG2 cells using Catalog

# PLAG1 antibody



Catalog Number: 113935

---

No:113935(PLAG1 Antibody) at dilution of 1:50

and Alexa Fluor 488-conjugated AffiniPure Goat  
Anti-Rabbit IgG(H+L)