

PLA2G4F antibody



Catalog Number: 113928

Product name

PLA2G4F antibody

Specificity

human; other species not tested.

Antibody description

PLA2G4F Rabbit Polyclonal antibody. Positive IHC detected in human prostate hyperplasia.

Preparation

This antibody was obtained by immunization of PLA2G4F recombinant protein (Accession Number: NM_213600). Purification method: Antigen affinity purified.

Formulation

PBS with 0.02% sodium azide and 50% glycerol pH 7.3.

Storage

Store at -20°C. DO NOT ALIQUOT

Clonality

Polyclonal

Ig Type

Rabbit IgG

Applications

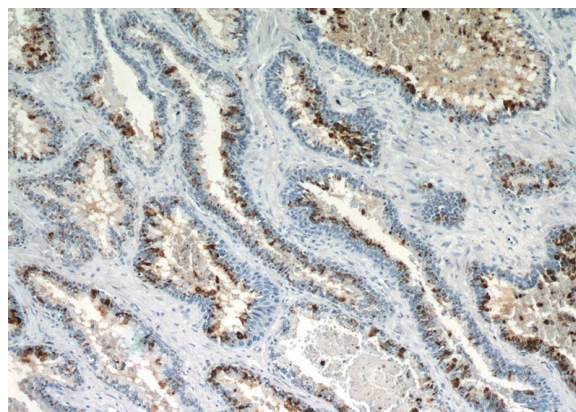
ELISA, IHC

Dilutions

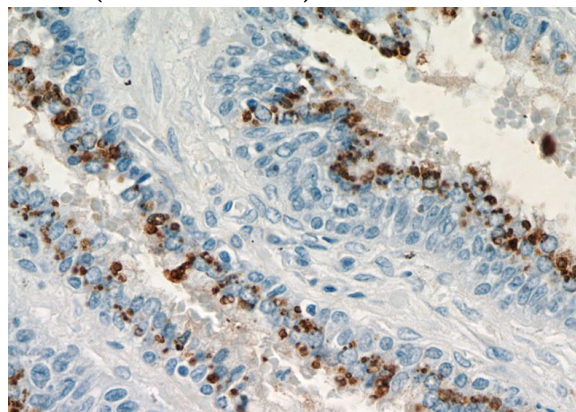
Recommended Dilution:

IHC: 1:20-1:200

Validations



Immunohistochemical of paraffin-embedded human prostate hyperplasia using Catalog No:113928(PLA2G4F antibody) at dilution of 1:200 (under 10x lens)



Immunohistochemical of paraffin-embedded human prostate hyperplasia using Catalog No:113928(PLA2G4F antibody) at dilution of 1:200 (under 40x lens)