

PLA2G12A antibody



Catalog Number: 113923

Product name

PLA2G12A antibody

WB: 1:500-1:5000

IHC: 1:20-1:200

Specificity

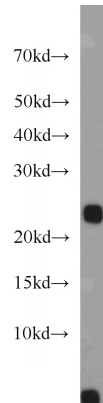
Human, Mouse, Rat; other species not tested.

IF: 1:20-1:200

Antibody description

PLA2G12A Rabbit Polyclonal antibody. Positive IHC detected in human colon cancer tissue, human skeletal muscle tissue. Positive IF detected in HEK-293 cells. Positive WB detected in mouse skeletal muscle tissue, HEK-293 cells, mouse heart tissue, mouse kidney tissue. Observed molecular weight by Western-blot: 21-24 kDa

Validations



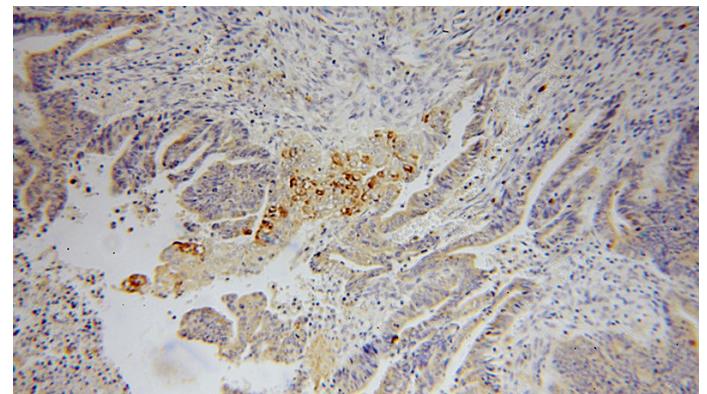
Preparation

This antibody was obtained by immunization of PLA2G12A recombinant protein (Accession Number: NM_030821). Purification method: Antigen affinity purified.

mouse skeletal muscle tissue were subjected to SDS PAGE followed by western blot with Catalog No:113923(PLA2G12A antibody) at dilution of 1:1000

Formulation

PBS with 0.02% sodium azide and 50% glycerol pH 7.3.



Storage

Store at -20°C. DO NOT ALIQUOT

Clonality

Polyclonal

Ig Type

Rabbit IgG

Immunohistochemical of paraffin-embedded human colon cancer using Catalog No:113923(PLA2G12A antibody) at dilution of 1:50 (under 10x lens)

Applications

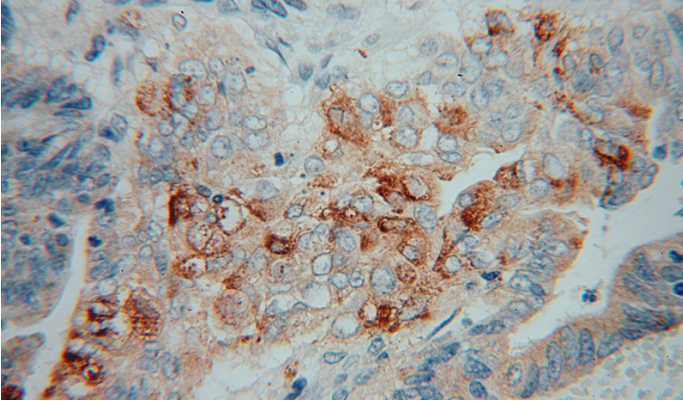
ELISA, WB, IHC, IF

Dilutions

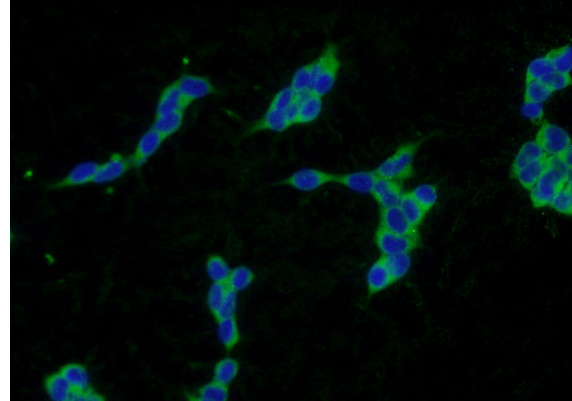
Recommended Dilution:

PLA2G12A antibody

Catalog Number: 113923



Immunohistochemical of paraffin-embedded human colon cancer using Catalog No:113923(PLA2G12A antibody) at dilution of 1:50 (under 40x lens)



Immunofluorescent analysis of HEK-293 cells using Catalog No:113923(PLA2G12A Antibody) at dilution of 1:50 and Alexa Fluor 488-conjugated AffiniPure Goat Anti-Rabbit IgG(H+L)