

# PIP4K2B antibody



Catalog Number: 113913

## Product name

PIP4K2B antibody

Recommended Dilution:

WB: 1:500-1:5000

## Immunogen

IHC: 1:20-1:200

[Human PIP4K2B Recombinant protein \(GST tag\)](#)

## Validations

## Specificity

Human, Mouse, Rat; other species not tested.

## Antibody description

PIP4K2B Rabbit Polyclonal antibody. Positive IHC detected in human pancreas cancer tissue, human kidney tissue. Positive WB detected in HeLa cells, HEK-293 cells, MCF7 cells. Observed molecular weight by Western-blot: 50-55kd

## Preparation

This antibody was obtained by immunization of PIP4K2B recombinant protein (Accession Number: NM\_138687). Purification method: Antigen affinity purified.

## Formulation

PBS with 0.02% sodium azide and 50% glycerol pH 7.3.

## Storage

Store at -20°C. DO NOT ALIQUOT

## Clonality

Polyclonal

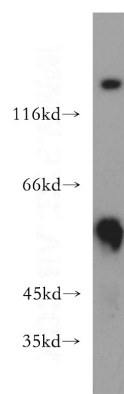
## Ig Type

Rabbit IgG

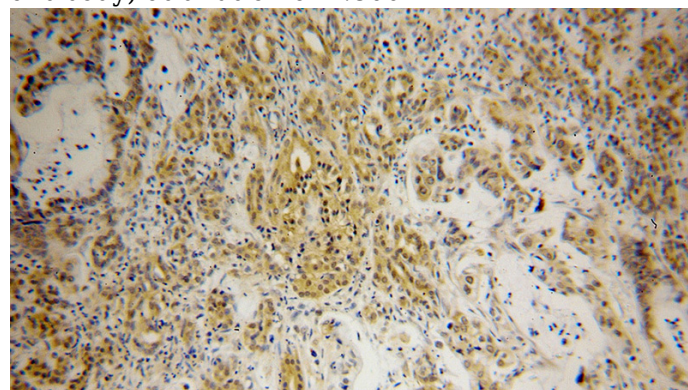
## Applications

ELISA, WB, IHC

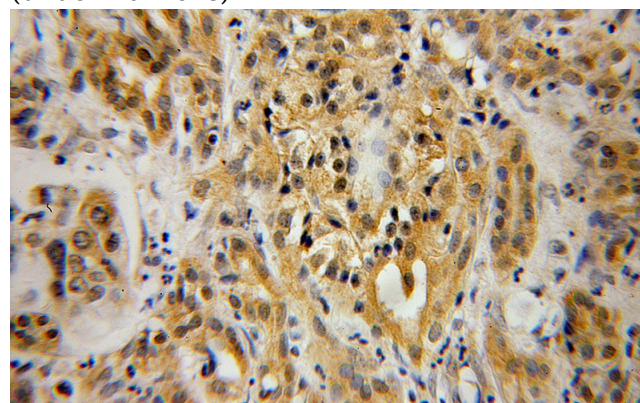
## Dilutions



HeLa cells were subjected to SDS PAGE followed by western blot with Catalog No:113913(PIP4K2B antibody) at dilution of 1:800



Immunohistochemical of paraffin-embedded human pancreas cancer using Catalog No:113913(PIP4K2B antibody) at dilution of 1:100 (under 10x lens)



# PIP4K2B antibody



Catalog Number: 113913

---

Immunohistochemical of paraffin-embedded  
human pancreas cancer using Catalog

No:113913(PIP4K2B antibody) at dilution of 1:100  
(under 40x lens)