

# PINK1 antibody



Catalog Number: 113910

## Product name

PINK1 antibody

## Specificity

Human, Mouse; other species not tested.

## Antibody description

PINK1 Rabbit Polyclonal antibody. Positive IHC detected in human brain tissue. Positive WB detected in HeLa cells, 293 cells, Jurkat cells, mouse liver tissue. Observed molecular weight by Western-blot: 65 kDa, 45 kDa

## Preparation

This antibody was obtained by immunization of PINK1 recombinant protein (Accession Number: NM\_032409). Purification method: Antigen Affinity purified.

## Formulation

PBS with 0.02% sodium azide and 50% glycerol pH 7.3.

## Storage

Store at -20°C. DO NOT ALIQUOT

## Clonality

Polyclonal

## Ig Type

Rabbit IgG

## Applications

ELISA, WB, IHC

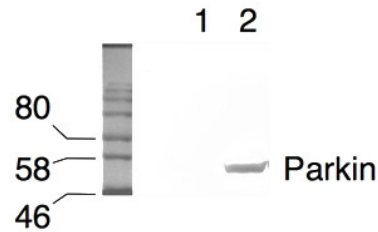
## Dilutions

Recommended Dilution:

WB: 1:200-1:2000

IHC: 1:50-1:500

## Validations

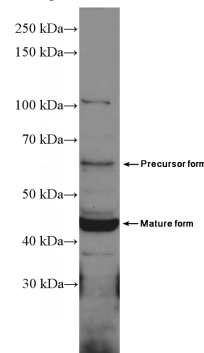


293/hParkin + hPINK1

1: no treatment

2: Parkin + PINK1 induction

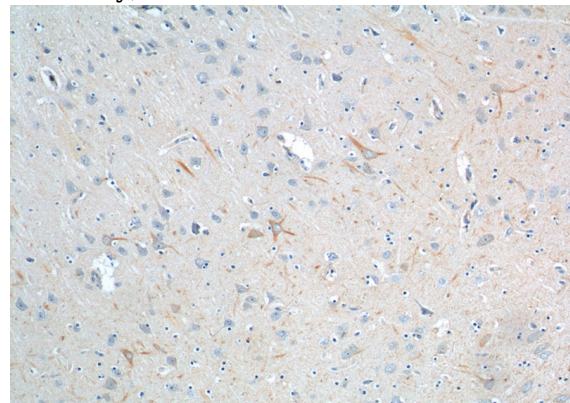
WB result of PINK1 antibody with Transfected 293 cells (courtesy of T. Izumi, PhD, University of



Under normal conditions, PINK1 is degraded constitutively and rapidly.

Kentucky).

HeLa cells were subjected to SDS PAGE followed by western blot with Catalog No:113910(PINK1 Antibody) at dilution of 1:600

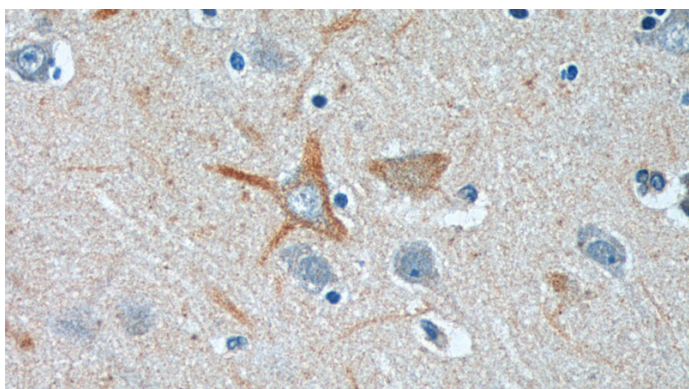


Immunohistochemistry of paraffin-embedded human brain tissue slide using Catalog No:113910(PINK1 Antibody) at dilution of 1:50 (under 10x lens).

# PINK1 antibody

Catalog Number: 113910

---



Immunohistochemistry of paraffin-embedded human brain tissue slide using Catalog No:113910(PINK1 Antibody) at dilution of 1:50 (under 40x lens).