

PIN1 antibody

Catalog Number: 113907

Product name

PIN1 antibody

IP: 1:200-1:2000

IHC: 1:20-1:200

Specificity

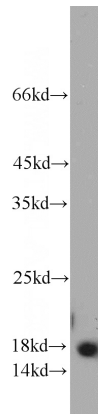
Human, Mouse, Rat; other species not tested.

IF: 1:20-1:200

Antibody description

PIN1 Rabbit Polyclonal antibody. Positive WB detected in HEK-293 cells, HeLa cells. Positive IP detected in HepG2 cells. Positive IF detected in HEK-293 cells. Positive IHC detected in human renal cell carcinoma tissue. Observed molecular weight by Western-blot: 18 kDa

Validations



Preparation

This antibody was obtained by immunization of PIN1 recombinant protein (Accession Number: NM_006221). Purification method: Antigen affinity purified.

HEK-293 cells were subjected to SDS PAGE followed by western blot with Catalog No:113907(PIN1 antibody) at dilution of 1:1000

Formulation

PBS with 0.1% sodium azide and 50% glycerol pH 7.3.

Storage

Store at -20°C. DO NOT ALIQUOT

Clonality

Polyclonal

Ig Type

Rabbit IgG

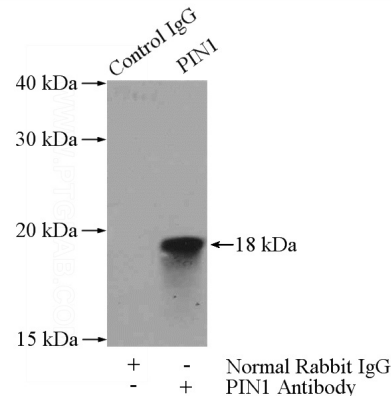
Applications

ELISA, WB, IHC, IP, IF

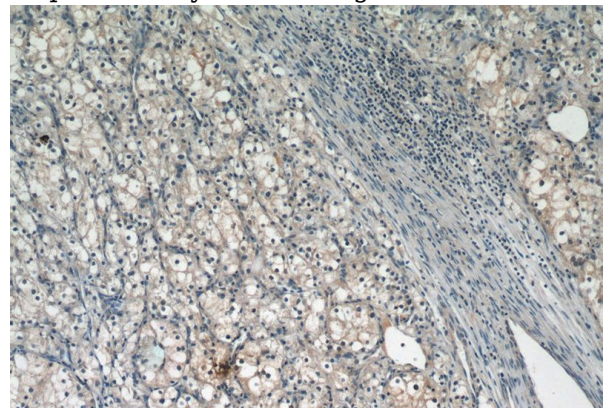
Dilutions

Recommended Dilution:

WB: 1:500-1:5000



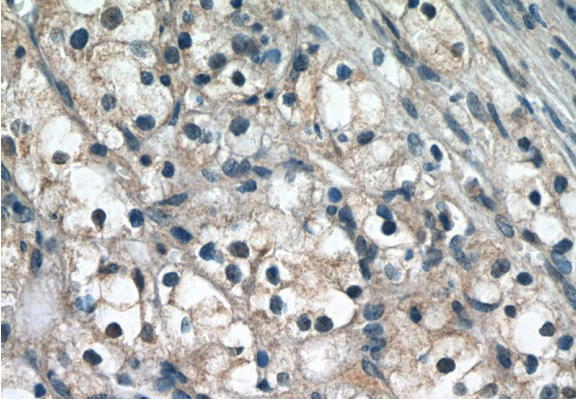
IP Result of anti-PIN1 (IP:Catalog No:113907, 4ug; Detection:Catalog No:113907 1:500) with HepG2 cells lysate 2400ug.



PIN1 antibody

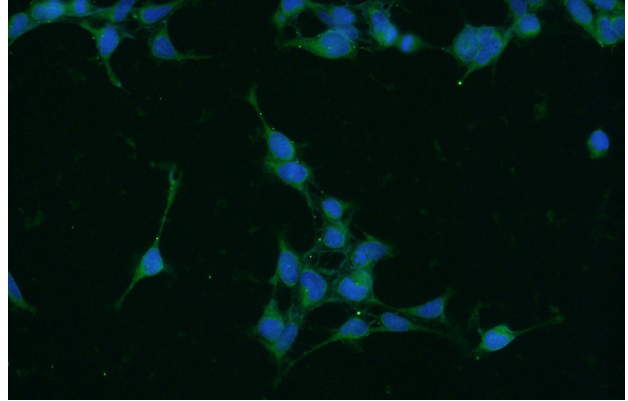
Catalog Number: 113907

Immunohistochemistry of paraffin-embedded human renal cell carcinoma tissue slide using Catalog No:113907(PIN1 Antibody) at dilution of 1:50 (under 10x lens)



Immunohistochemistry of paraffin-embedded human renal cell carcinoma tissue slide using

Catalog No:113907(PIN1 Antibody) at dilution of 1:50 (under 40x lens)



Immunofluorescent analysis of HEK-293 cells using Catalog No:113907(PIN1 Antibody) at dilution of 1:50 and Alexa Fluor 488-conjugated AffiniPure Goat Anti-Rabbit IgG(H+L)