

# PIM2 antibody

Catalog Number: 113906

## Product name

PIM2 antibody

## Specificity

Human; other species not tested.

## Antibody description

PIM2 Rabbit Polyclonal antibody. Positive IP detected in Raji cells. Observed molecular weight by Western-blot: 34 kDa

## Preparation

This antibody was obtained by immunization of PIM2 recombinant protein (Accession Number: NM\_006875). Purification method: Antigen affinity purified.

## Formulation

PBS with 0.1% sodium azide and 50% glycerol pH 7.3.

## Storage

Store at -20°C. DO NOT ALIQUOT

## Clonality

Polyclonal

## Ig Type

Rabbit IgG

## Applications

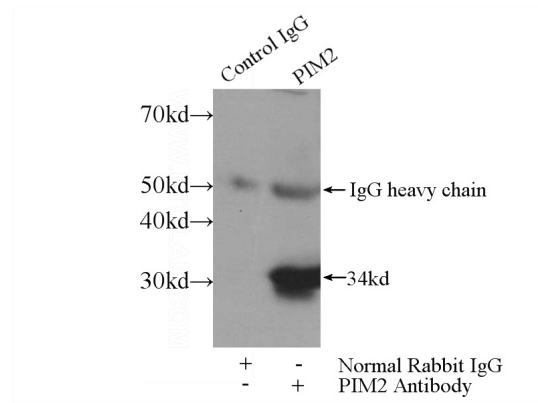
ELISA, IP

## Dilutions

Recommended Dilution:

IP: 1:200-1:1000

## Validations



IP Result of anti-PIM2 (IP:Catalog No:113906, 4ug; Detection:Catalog No:113906 1:300) with Raji cells lysate 1320ug.