

PIGF antibody



Catalog Number: 113892

Product name

PIGF antibody

IP: 1:200-1:2000

IHC: 1:20-1:200

Specificity

Human; other species not tested.

Antibody description

PIGF Rabbit Polyclonal antibody. Positive IP detected in human placenta tissue. Positive WB detected in MCF7 cells. Positive IHC detected in human placenta tissue, human breast cancer tissue, human meningioma tissue. Observed molecular weight by Western-blot: 25-30 kDa

Preparation

This antibody was obtained by immunization of PIGF recombinant protein (Accession Number: NM_002632). Purification method: Antigen affinity purified.

Formulation

PBS with 0.1% sodium azide and 50% glycerol pH 7.3.

Storage

Store at -20°C. DO NOT ALIQUOT

Clonality

Polyclonal

Ig Type

Rabbit IgG

Applications

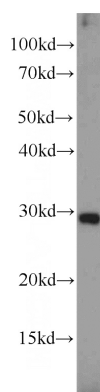
ELISA, WB, IHC, IP

Dilutions

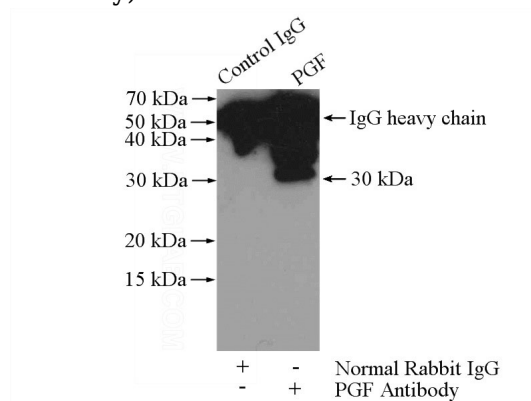
Recommended Dilution:

WB: 1:200-1:2000

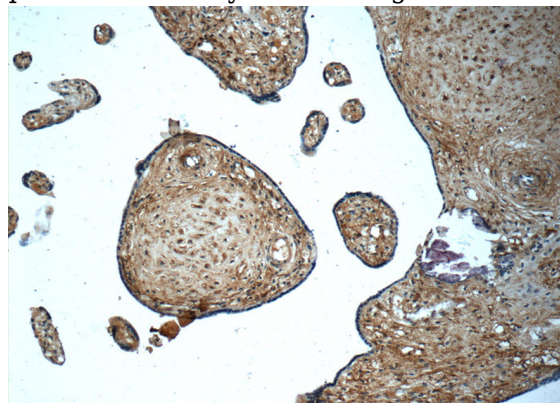
Validations



MCF7 cells were subjected to SDS PAGE followed by western blot with Catalog No:113892(PGF antibody) at dilution of 1:300



IP Result of anti-PGF (IP:Catalog No:113892, 4ug; Detection:Catalog No:113892 1:500) with human placenta tissue lysate 4400ug.

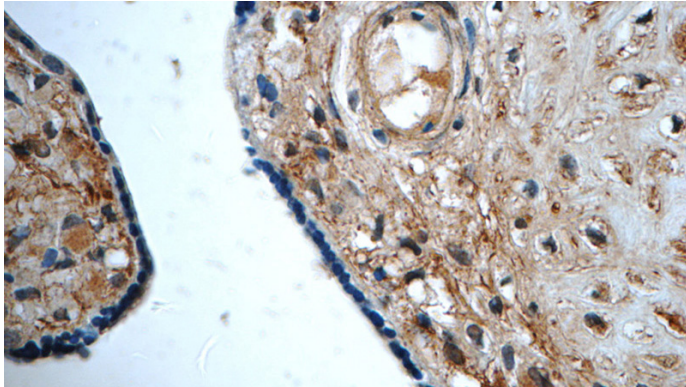


Immunohistochemistry of paraffin-embedded human placenta tissue slide using Catalog

PIGF antibody

Catalog Number: 113892

No:113892(PGF Antibody) at dilution of 1:50
(under 10x lens)



Immunohistochemistry of paraffin-embedded
human placenta tissue slide using Catalog
No:113892(PGF Antibody) at dilution of 1:50
(under 40x lens)