

# PIBF1 antibody



Catalog Number: 113885

## Product name

PIBF1 antibody

IP: 1:200-1:2000

IF: 1:10-1:100

## Specificity

Human, Mouse, Rat; other species not tested.

## Antibody description

PIBF1 Rabbit Polyclonal antibody. Positive IF detected in MCF-7 cells. Positive WB detected in HeLa cells, HEK-293 cells, K-562 cells, MCF7 cells. Positive IP detected in HEK-293 cells. Observed molecular weight by Western-blot: 90 kDa

## Preparation

This antibody was obtained by immunization of PIBF1 recombinant protein (Accession Number: NM\_006346). Purification method: Antigen affinity purified.

## Formulation

PBS with 0.02% sodium azide and 50% glycerol pH 7.3.

## Storage

Store at -20°C. DO NOT ALIQUOT

## Clonality

Polyclonal

## Ig Type

Rabbit IgG

## Applications

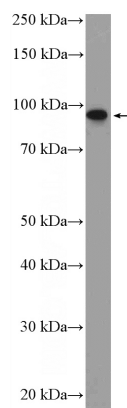
ELISA, IF, WB, IP

## Dilutions

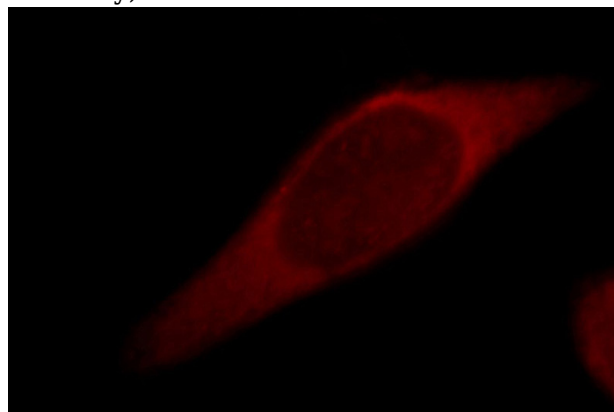
Recommended Dilution:

WB: 1:500-1:5000

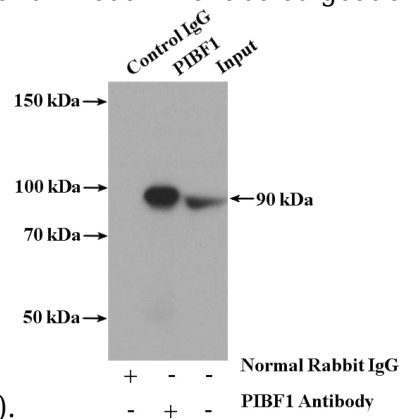
## Validations



HeLa cells were subjected to SDS PAGE followed by western blot with Catalog No:113885(PIBF1 Antibody) at dilution of 1:1000



Immunofluorescent analysis of MCF-7 cells, using PIBF1 antibody Catalog No:113885 at 1:25 dilution and Rhodamine-labeled goat anti-rabbit



IgG (red).

IP Result of anti-PIBF1 (IP:Catalog No:113885,

# PIBF1 antibody



Catalog Number: 113885

---

4ug; Detection:Catalog No:113885 1:500) with HEK-293 cells lysate 1120ug.