

PKC iota antibody



Catalog Number: 113852

Product name

PKC iota antibody

IP: 1:200-1:2000

IHC: 1:20-1:200

Specificity

Human, Mouse, Rat; other species not tested.

Antibody description

PKC iota Rabbit Polyclonal antibody. Positive WB detected in HeLa cells, MCF7 cells, MCF-7 cells. Positive IP detected in HeLa cells. Positive IHC detected in human breast cancer tissue. Observed molecular weight by Western-blot: 67 kDa

Preparation

This antibody was obtained by immunization of PKC iota recombinant protein (Accession Number: BC022016). Purification method: Antigen affinity purified.

Formulation

PBS with 0.02% sodium azide and 50% glycerol pH 7.3.

Storage

Store at -20°C. DO NOT ALIQUOT

Clonality

Polyclonal

Ig Type

Rabbit IgG

Applications

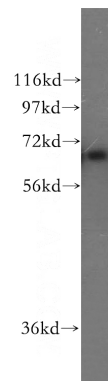
ELISA, IHC, WB, IP

Dilutions

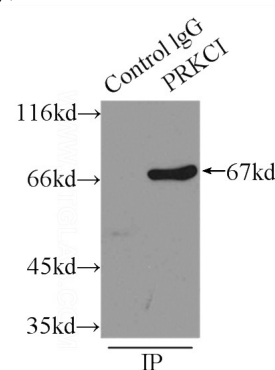
Recommended Dilution:

WB: 1:200-1:2000

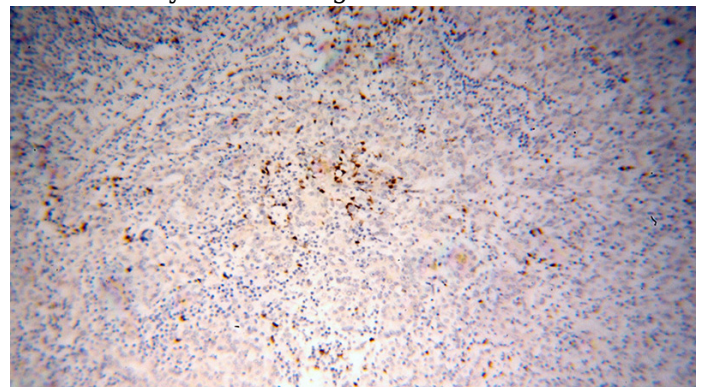
Validations



HeLa cells were subjected to SDS PAGE followed by western blot with Catalog No:113852(PRKCI antibody) at dilution of 1:500



IP Result of anti-PRKCI (IP:Catalog No:113852, 3ug; Detection:Catalog No:113852 1:500) with HeLa cells lysate 2500ug.



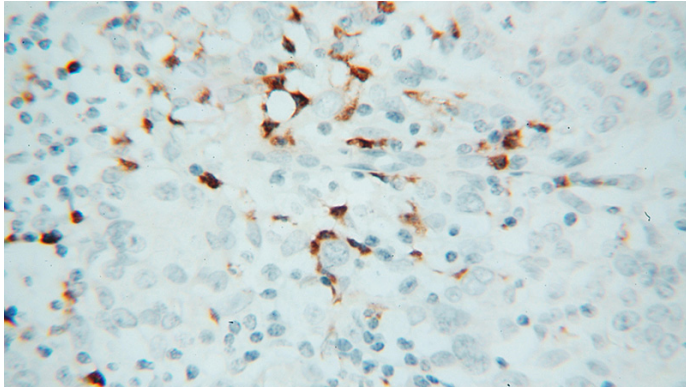
Immunohistochemical of paraffin-embedded human breast cancer using Catalog

PKC iota antibody



Catalog Number: 113852

No:113852(PRKCI antibody) at dilution of 1:100
(under 10x lens)



Immunohistochemical of paraffin-embedded
human breast cancer using Catalog
No:113852(PRKCI antibody) at dilution of 1:100
(under 40x lens)