

PKC epsilon antibody



Catalog Number: 113850

Product name

PKC epsilon antibody

IP: 1:200-1:2000

IHC: 1:20-1:200

Specificity

Human, Mouse, Rat; other species not tested.

Antibody description

PKC epsilon Rabbit Polyclonal antibody. Positive WB detected in SH-SY5Y cells, mouse brain tissue. Positive IP detected in SH-SY5Y cells. Positive IHC detected in human thyroid cancer tissue. Observed molecular weight by Western-blot: 84 kDa

Preparation

This antibody was obtained by immunization of PKC epsilon recombinant protein (Accession Number: NM_005400). Purification method: Antigen affinity purified.

Formulation

PBS with 0.02% sodium azide and 50% glycerol pH 7.3.

Storage

Store at -20°C. DO NOT ALIQUOT

Clonality

Polyclonal

Ig Type

Rabbit IgG

Applications

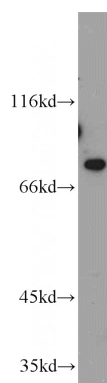
ELISA, WB, IHC, IP

Dilutions

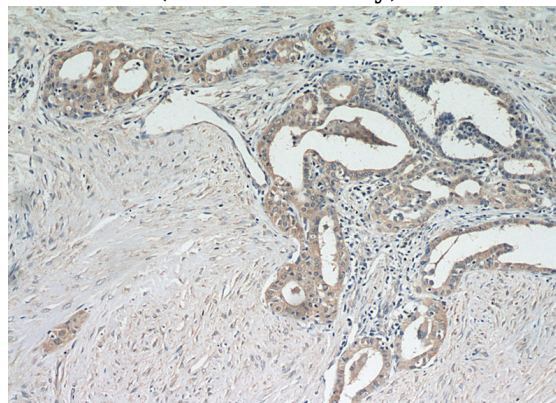
Recommended Dilution:

WB: 1:500-1:5000

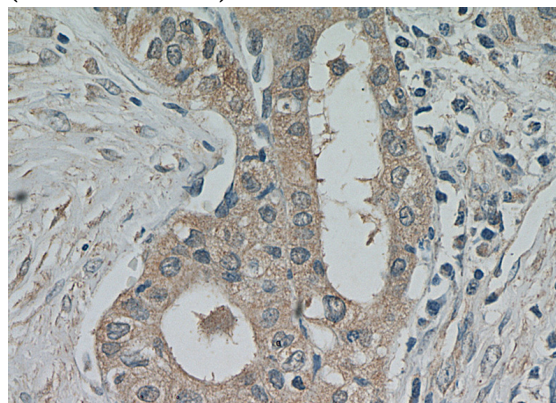
Validations



SH-SY5Y cells were subjected to SDS PAGE followed by western blot with Catalog No:113850(PRKCE antibody) at dilution of 1:800



Immunohistochemical of paraffin-embedded human thyroid cancer using Catalog No:113850(PRKCE antibody) at dilution of 1:100 (under 10x lens)



Immunohistochemical of paraffin-embedded

PKC epsilon antibody

Catalog Number: 113850

human thyroid cancer using Catalog No:113850(PRKCE antibody) at dilution of 1:100 (under 40x lens)

IP Result of anti-PRKCE (IP:Catalog No:113850, 4ug; Detection:Catalog No:113850 1:800) with SH-SY5Y cells lysate 1600ug.

