

PKC alpha antibody

Catalog Number: 113846

Product name

PKC alpha antibody

IP: 1:500-1:5000

IHC: 1:20-1:200

Specificity

Human, Mouse; other species not tested.

IF: 1:20-1:200

Antibody description

PKC alpha Rabbit Polyclonal antibody. Positive IHC detected in human thyroid cancer tissue. Positive IF detected in NIH/3T3 cells. Positive WB detected in Jurkat cells, NIH/3T3 cells. Positive IP detected in NIH/3T3 cells. Observed molecular weight by Western-blot: 77 kDa

Preparation

This antibody was obtained by immunization of PKC alpha recombinant protein (Accession Number: AK055431). Purification method: Antigen affinity purified.

Formulation

PBS with 0.02% sodium azide and 50% glycerol pH 7.3.

Storage

Store at -20°C. DO NOT ALIQUOT

Clonality

Polyclonal

Ig Type

Rabbit IgG

Applications

ELISA, WB, IP, IHC, IF

Dilutions

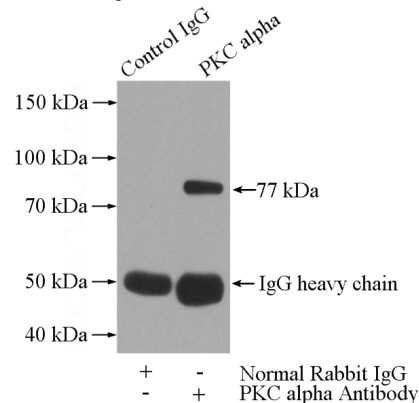
Recommended Dilution:

WB: 1:500-1:5000

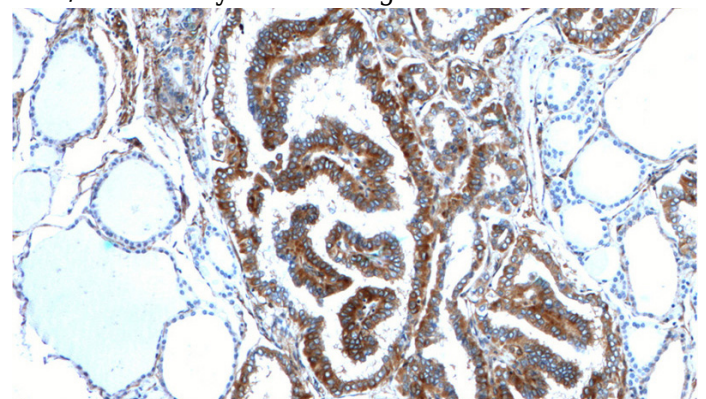
Validations



Jurkat cells were subjected to SDS PAGE followed by western blot with Catalog No:113846(PKC alpha antibody) at dilution of 1:1000



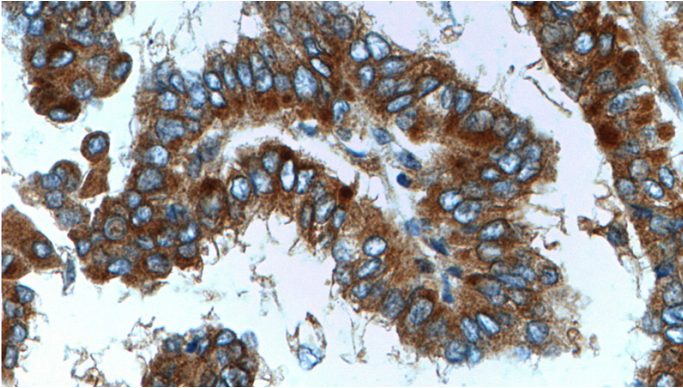
IP Result of anti-PRKCA (IP:Catalog No:113846, 4ug; Detection:Catalog No:113846 1:1000) with NIH/3T3 cells lysate 1600ug.



PKC alpha antibody

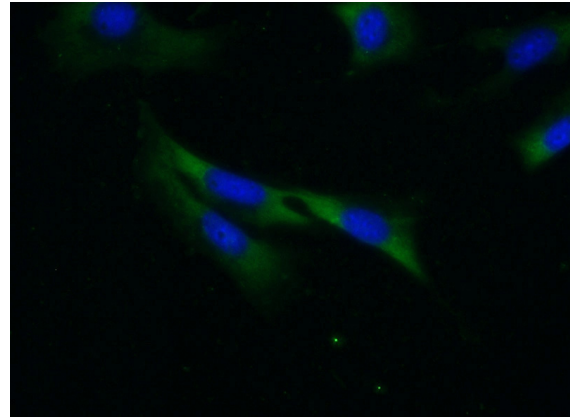
Catalog Number: 113846

Immunohistochemistry of paraffin-embedded human thyroid cancer tissue slide using Catalog No:113846(PRKCA Antibody) at dilution of 1:200 (under 10x lens).



Immunohistochemistry of paraffin-embedded human thyroid cancer tissue slide using Catalog No:113846(PRKCA Antibody) at dilution of 1:200

(under 40x lens).



Immunofluorescent analysis of (-20oc Ethanol) fixed NIH/3T3 cells using Catalog No:113846(PRKCA Antibody) at dilution of 1:50 and Alexa Fluor 488-conjugated AffiniPure Goat Anti-Rabbit IgG(H+L)