

# PIWIL1 antibody



Catalog Number: 113841

## Product name

PIWIL1 antibody

Recommended Dilution:

WB: 1:200-1:2000

## Specificity

Human, Mouse; other species not tested.

IP: 1:200-1:2000

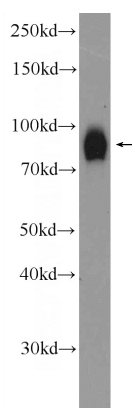
IHC: 1:20-1:200

## Antibody description

PIWIL1 Rabbit Polyclonal antibody. Positive IF detected in HepG2 cells. Positive IHC detected in human testis tissue, human liver cancer tissue, human prostate cancer tissue. Positive WB detected in human testis tissue, mouse testis tissue. Positive IP detected in mouse testis tissue. Observed molecular weight by Western-blot: 85-95 kDa

IF: 1:20-1:200

## Validations



human testis tissue were subjected to SDS PAGE followed by western blot with Catalog No:113841(PIWIL1 Antibody) at dilution of 1:600

## Preparation

This antibody was obtained by immunization of PIWIL1 recombinant protein (Accession Number: XM\_011539004). Purification method: Antigen affinity purified.

## Formulation

PBS with 0.1% sodium azide and 50% glycerol pH 7.3.

## Storage

Store at -20°C. DO NOT ALIQUOT

## Clonality

Polyclonal

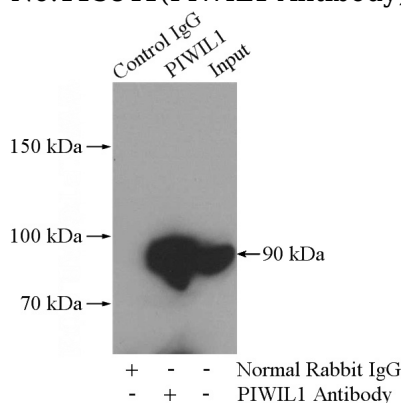
## Ig Type

Rabbit IgG

## Applications

ELISA, WB, IF, IHC, IP

## Dilutions



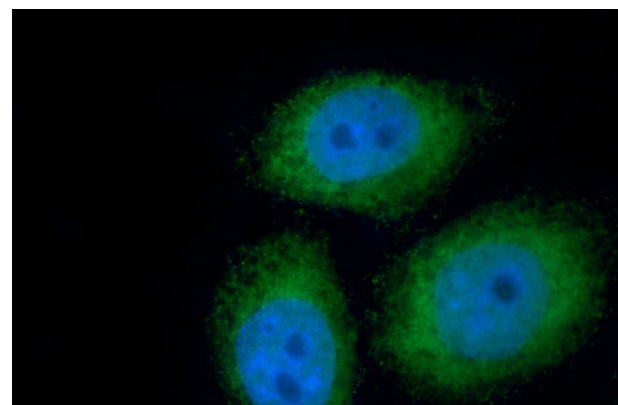
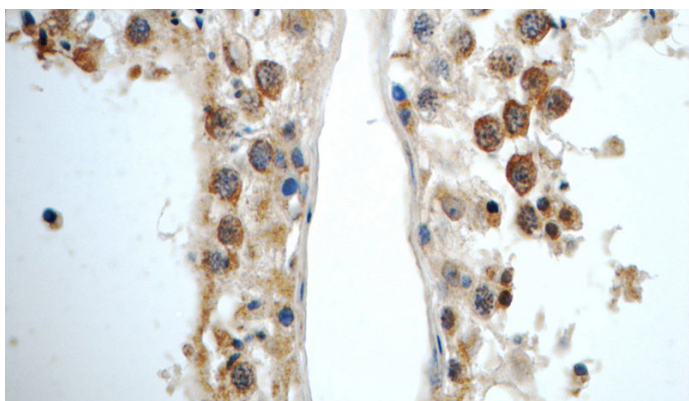
IP Result of anti-PIWIL1 (IP:Catalog No:113841, 4ug; Detection:Catalog No:113841 1:500) with mouse testis tissue lysate 2400ug.

# PIWIL1 antibody



Catalog Number: 113841

---



Immunohistochemistry of paraffin-embedded human testis tissue slide using Catalog No:113841(PIWIL1 Antibody) at dilution of 1:50 (under 40x lens)

Immunofluorescent analysis of HepG2 cells using Catalog No:113841(PIWIL1 Antibody) at dilution of 1:50 and Alexa Fluor 488-conjugated AffiniPure Goat Anti-Rabbit IgG(H+L)