

PITX1 antibody



Catalog Number: 113840

Product name

PITX1 antibody

WB: 1:500-1:5000

IP: 1:500-1:5000

Specificity

Human, Mouse; other species not tested.

IHC: 1:20-1:200

IF: 1:10-1:100

Antibody description

PITX1 Rabbit Polyclonal antibody. Positive IF detected in HepG2 cells. Positive IHC detected in human tonsillitis tissue, human colon tissue. Positive WB detected in HeLa cells, A431 cells, MCF7 cells. Positive IP detected in HeLa cells. Observed molecular weight by Western-blot: 38-40 kDa

Preparation

This antibody was obtained by immunization of PITX1 recombinant protein (Accession Number: NM_002653). Purification method: Antigen affinity purified.

Formulation

PBS with 0.1% sodium azide and 50% glycerol pH 7.3.

Storage

Store at -20°C. DO NOT ALIQUOT

Clonality

Polyclonal

Ig Type

Rabbit IgG

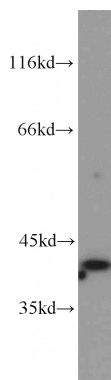
Applications

ELISA, WB, IHC, IF, IP

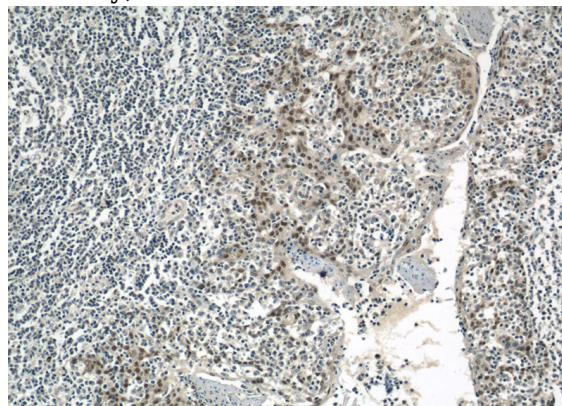
Dilutions

Recommended Dilution:

Validations



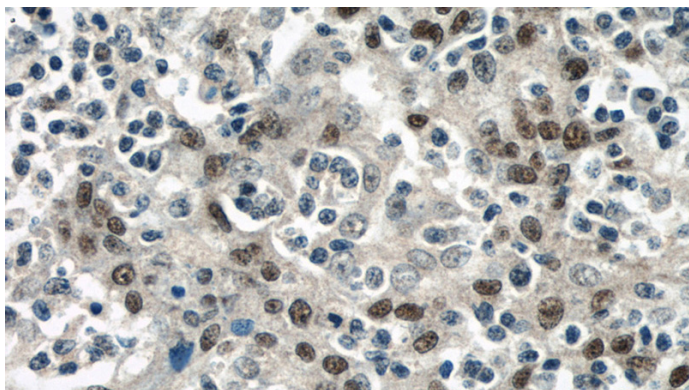
HeLa cells were subjected to SDS PAGE followed by western blot with Catalog No:113840(PITX1 antibody) at dilution of 1:800



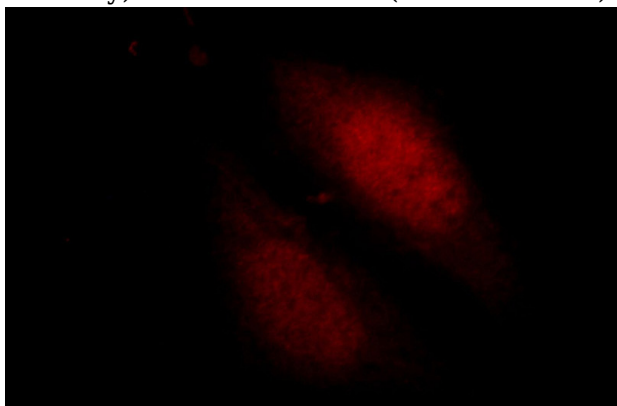
Immunohistochemical of paraffin-embedded human tonsillitis using Catalog No:113840(PITX1 antibody) at dilution of 1:50 (under 10x lens)

PITX1 antibody

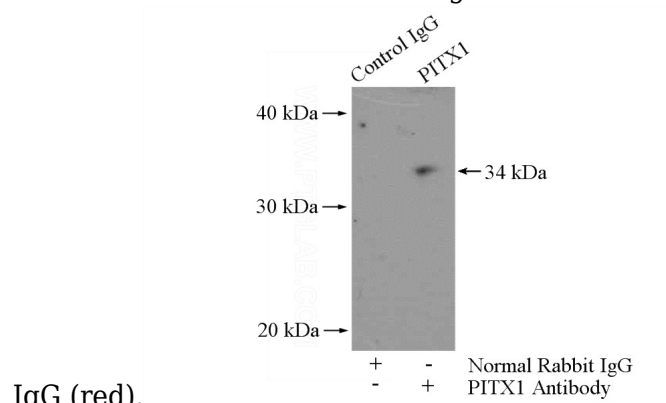
Catalog Number: 113840



Immunohistochemical of paraffin-embedded human tonsillitis using Catalog No:113840(PITX1 antibody) at dilution of 1:50 (under 40x lens)



Immunofluorescent analysis of HepG2 cells, using PITX1 antibody Catalog No:113840 at 1:25 dilution and Rhodamine-labeled goat anti-rabbit



IgG (red).

IP Result of anti-PITX1 (IP:Catalog No:113840, 4ug; Detection:Catalog No:113840 1:1000) with HeLa cells lysate 1200ug.