

# PITRM1 antibody

Catalog Number: 113839

## Product name

PITRM1 antibody

## Specificity

Human, Mouse, Rat; other species not tested.

## Antibody description

PITRM1 Rabbit Polyclonal antibody. Positive IP detected in A549 cells. Positive WB detected in human placenta tissue, A549 cells, mouse testis tissue. Observed molecular weight by Western-blot: 110-117 kDa

## Preparation

This antibody was obtained by immunization of PITRM1 recombinant protein (Accession Number: BC001150). Purification method: Antigen affinity purified.

## Formulation

PBS with 0.1% sodium azide and 50% glycerol pH 7.3.

## Storage

Store at -20°C. DO NOT ALIQUOT

## Clonality

Polyclonal

## Ig Type

Rabbit IgG

## Applications

ELISA, WB, IP

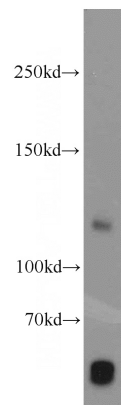
## Dilutions

Recommended Dilution:

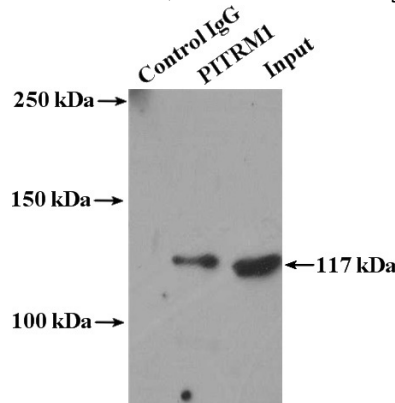
WB: 1:200-1:1000

IP: 1:200-1:2000

## Validations



human placenta tissue were subjected to SDS PAGE followed by western blot with Catalog No:113839(PITRM1 antibody) at dilution of 1:300



IP Result of anti-PITRM1 (IP:Catalog No:113839, 4ug; Detection:Catalog No:113839 1:500) with A549 cells lysate 2000ug.