

# PISD antibody



Catalog Number: 113835

## Product name

PISD antibody

WB: 1:500-1:5000

IP: 1:200-1:2000

## Specificity

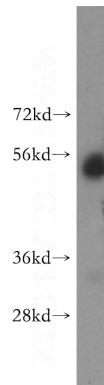
Human, Mouse, Rat; other species not tested.

IHC: 1:20-1:200

## Antibody description

PISD Rabbit Polyclonal antibody. Positive IP detected in L02 cells. Positive WB detected in K-562 cells, COLO 320 cells, HeLa cells, HepG2 cells, human kidney tissue, human spleen tissue, L02 cells, NIH/3T3 cells. Positive IHC detected in human kidney tissue. Observed molecular weight by Western-blot: 50~55kd

## Validations



## Preparation

This antibody was obtained by immunization of PISD recombinant protein (Accession Number: NM\_178022). Purification method: Antigen affinity purified.

K-562 cells were subjected to SDS PAGE followed by western blot with Catalog No:113835(PISD antibody) at dilution of 1:300

## Formulation

PBS with 0.02% sodium azide and 50% glycerol pH 7.3.

## Storage

Store at -20°C. DO NOT ALIQUOT

## Clonality

Polyclonal

## Ig Type

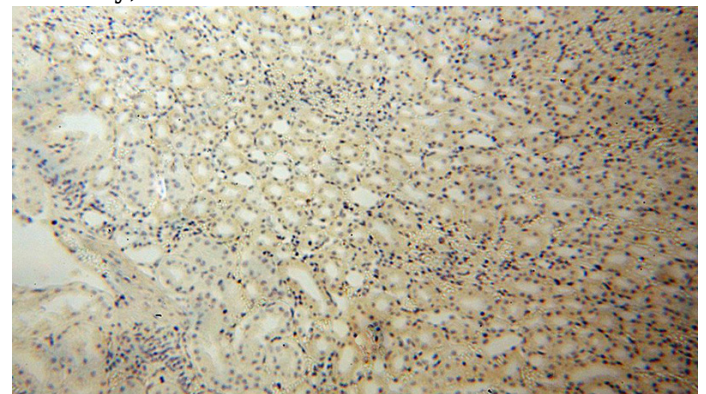
Rabbit IgG

## Applications

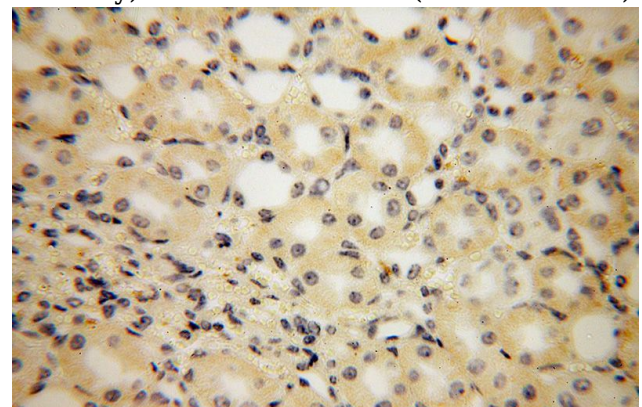
ELISA, WB, IHC, IP

## Dilutions

Recommended Dilution:



Immunohistochemical of paraffin-embedded human kidney using Catalog No:113835(PISD antibody) at dilution of 1:100 (under 10x lens)



# PISD antibody



Catalog Number: 113835

Immunohistochemical of paraffin-embedded human kidney using Catalog No:113835(PISD antibody) at dilution of 1:100 (under 40x lens)

IP Result of anti-PISD (IP:Catalog No:113835, 3ug; Detection:Catalog No:113835 1:500) with L02 cells lysate 1400ug.

