

# Phospholemman/FXYD1 antibody



Catalog Number: 113828

## Product name

Phospholemman/FXYD1 antibody

Recommended Dilution:

WB: 1:200-1:2000

## Specificity

Human, Mouse, Rat; other species not tested.

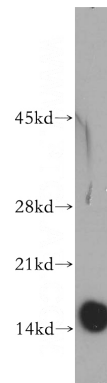
IP: 1:200-1:2000

IHC: 1:20-1:200

## Antibody description

Phospholemman/FXYD1 Rabbit Polyclonal antibody. Positive IHC detected in human heart tissue, human skeletal muscle tissue. Positive IP detected in mouse heart tissue. Positive WB detected in mouse skeletal muscle tissue, human brain tissue, human skeletal muscle tissue, mouse heart tissue, mouse kidney tissue, rat heart tissue, rat skeletal muscle tissue. Observed molecular weight by Western-blot: 10-15 kDa

## Validations



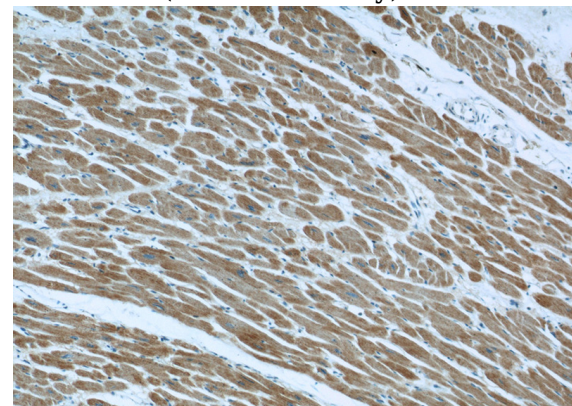
## Preparation

This antibody was obtained by immunization of Phospholemman/FXYD1 recombinant protein (Accession Number: NM\_001278717). Purification method: Antigen affinity purified.

mouse skeletal muscle tissue were subjected to SDS PAGE followed by western blot with Catalog No:113828(FXYD1 antibody) at dilution of 1:200

## Formulation

PBS with 0.02% sodium azide and 50% glycerol pH 7.3.



## Storage

Store at -20°C. DO NOT ALIQUOT

## Clonality

Polyclonal

Immunohistochemical of paraffin-embedded human heart using Catalog No:113828(FXYD1 antibody) at dilution of 1:50 (under 10x lens)

## Ig Type

Rabbit IgG

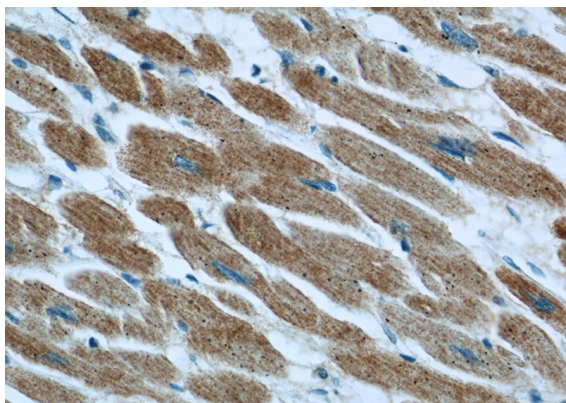
## Applications

ELISA, WB, IHC, IP

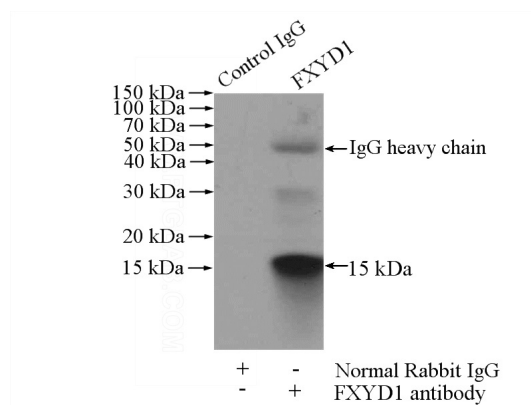
## Dilutions

# Phospholemman/FXYD1 antibody

Catalog Number: 113828



Immunohistochemical of paraffin-embedded human heart using Catalog No:113828(FXYD1 antibody) at dilution of 1:50 (under 40x lens)



IP Result of anti-FXYD1 (IP:Catalog No:113828, 4ug; Detection:Catalog No:113828 1:500) with mouse heart tissue lysate 4000ug.