

PHLPPL antibody

Catalog Number: 113826

Product name

PHLPPL antibody

WB: 1:200-1:2000

IP: 1:200-1:2000

Specificity

Human, Mouse, Rat; other species not tested.

IHC: 1:20-1:200

IF: 1:10-1:100

Antibody description

PHLPPL Rabbit Polyclonal antibody. Positive IF detected in HeLa cells. Positive IHC detected in human colon cancer tissue, human colon tissue. Positive IP detected in NIH/3T3 cells. Positive WB detected in NIH/3T3 cells, HEK-293 cells, HeLa cells, HT-1080 cells, mouse brain tissue. Observed molecular weight by Western-blot: 147 kDa

Preparation

This antibody was obtained by immunization of PHLPPL recombinant protein (Accession Number: NM_015020). Purification method: Antigen affinity purified.

Formulation

PBS with 0.1% sodium azide and 50% glycerol pH 7.3.

Storage

Store at -20°C. DO NOT ALIQUOT

Clonality

Polyclonal

Ig Type

Rabbit IgG

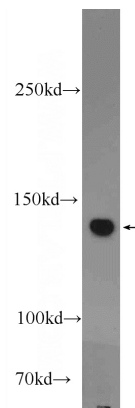
Applications

ELISA, WB, IF, IHC, IP

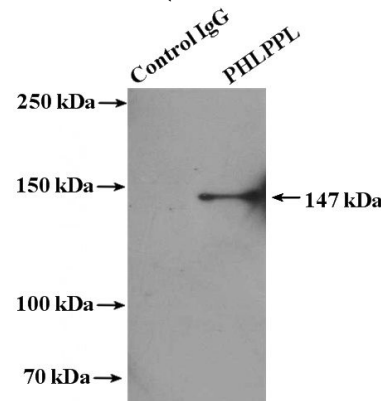
Dilutions

Recommended Dilution:

Validations



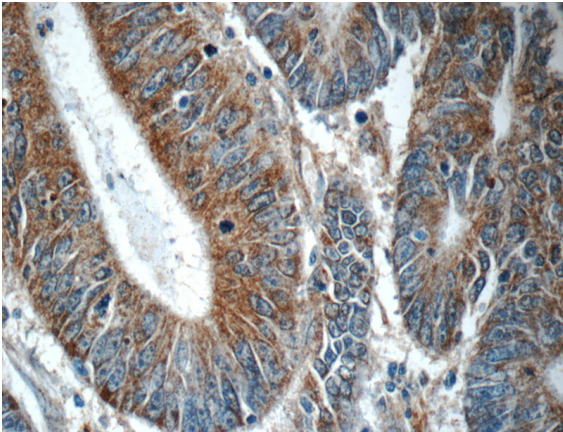
NIH/3T3 cells were subjected to SDS PAGE followed by western blot with Catalog No:113826(PHLPPL Antibody) at dilution of 1:600



IP Result of anti-PHLPPL (IP:Catalog No:113826, 4ug; Detection:Catalog No:113826 1:600) with NIH/3T3 cells lysate 2000ug.

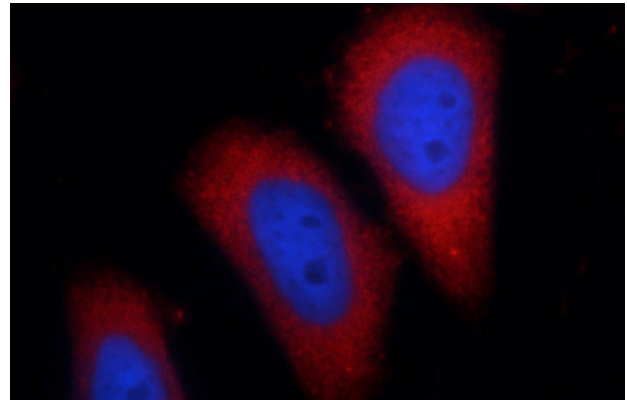
PHLPPL antibody

Catalog Number: 113826



Immunohistochemistry of paraffin-embedded human colon cancer tissue slide using Catalog No:113826(PHLPPL Antibody) at dilution of 1:50

(under 40x lens)



Immunofluorescent analysis of HeLa cells using Catalog No:113826(PHLPPL Antibody) at dilution of 1:25 and Rhodamine-Goat anti-Rabbit IgG