

# PHKG2 antibody

Catalog Number: 113822

## Product name

PHKG2 antibody

IHC: 1:20-1:200

IF: 1:10-1:100

## Specificity

Human, Mouse, Rat; other species not tested.

## Antibody description

PHKG2 Rabbit Polyclonal antibody. Positive IHC detected in human liver cancer tissue. Positive IF detected in Hela cells. Positive WB detected in mouse testis tissue, HEK-293 cells. Observed molecular weight by Western-blot: 46kd

## Preparation

This antibody was obtained by immunization of PHKG2 recombinant protein (Accession Number: NM\_000294). Purification method: Antigen affinity purified.

## Formulation

PBS with 0.02% sodium azide and 50% glycerol pH 7.3.

## Storage

Store at -20°C. DO NOT ALIQUOT

## Clonality

Polyclonal

## Ig Type

Rabbit IgG

## Applications

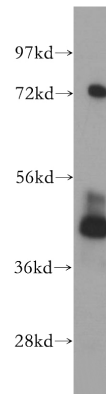
ELISA, WB, IHC, IF

## Dilutions

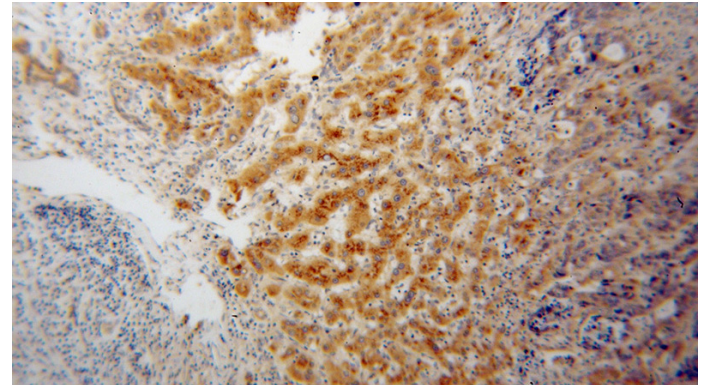
Recommended Dilution:

WB: 1:500-1:5000

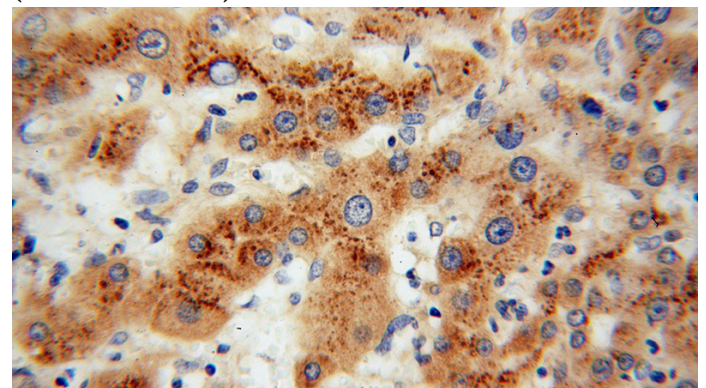
## Validations



mouse testis tissue were subjected to SDS PAGE followed by western blot with Catalog No:113822(PHKG2 antibody) at dilution of 1:300



Immunohistochemical of paraffin-embedded human liver cancer using Catalog No:113822(PHKG2 antibody) at dilution of 1:100 (under 10x lens)



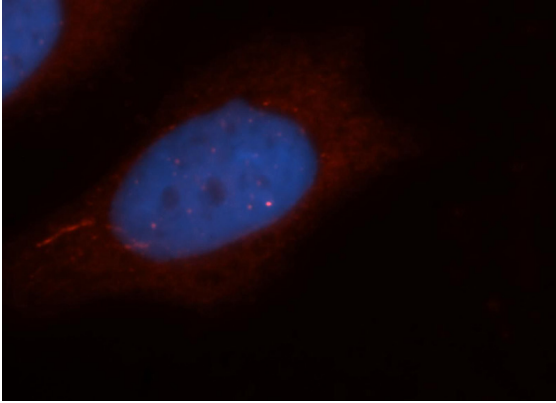
Immunohistochemical of paraffin-embedded

# PHKG2 antibody

Catalog Number: 113822

---

human liver cancer using Catalog  
No:113822(PHKG2 antibody) at dilution of 1:100  
(under 40x lens)



Immunofluorescent analysis of Hela cells, using  
PHKG2 antibody Catalog No:113822 at 1:25  
dilution and Rhodamine-labeled goat anti-rabbit  
IgG (red). Blue pseudocolor = DAPI (fluorescent  
DNA dye).