

# PHF20 antibody



Catalog Number: 113812

## Product name

PHF20 antibody

## Specificity

Human, Mouse; other species not tested.

## Antibody description

PHF20 Rabbit Polyclonal antibody. Positive WB detected in HeLa cells, Jurkat cells, mouse testis tissue. Observed molecular weight by Western-blot: 130 kDa

## Preparation

This antibody was obtained by immunization of PHF20 recombinant protein (Accession Number: XM\_047440181). Purification method: Antigen affinity purified.

## Formulation

PBS with 0.02% sodium azide and 50% glycerol pH 7.3.

## Storage

Store at -20°C. DO NOT ALIQUOT

## Clonality

Polyclonal

## Ig Type

Rabbit IgG

## Applications

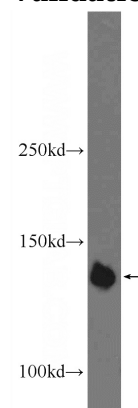
ELISA, WB

## Dilutions

Recommended Dilution:

WB: 1:500-1:5000

## Validations



HeLa cells were subjected to SDS PAGE followed by western blot with Catalog No:113812(PHF20 Antibody) at dilution of 1:1000