

# PHF19 antibody



Catalog Number: 113810

## Product name

PHF19 antibody

IP: 1:200-1:2000

IF: 1:20-1:200

## Specificity

Human, Mouse, Rat; other species not tested.

## Antibody description

PHF19 Rabbit Polyclonal antibody. Positive IP detected in HeLa cells, Mouse ES cells. Positive WB detected in rat brain tissue, mouse ES cells and 293 cells. Positive IF detected in Mouse ES cells. Observed molecular weight by Western-blot: 66 kDa

## Preparation

This antibody was obtained by immunization of PHF19 recombinant protein (Accession Number: NM\_001009936). Purification method: Antigen affinity purified.

## Formulation

PBS with 0.1% sodium azide and 50% glycerol pH 7.3.

## Storage

Store at -20°C. DO NOT ALIQUOT

## Clonality

Polyclonal

## Ig Type

Rabbit IgG

## Applications

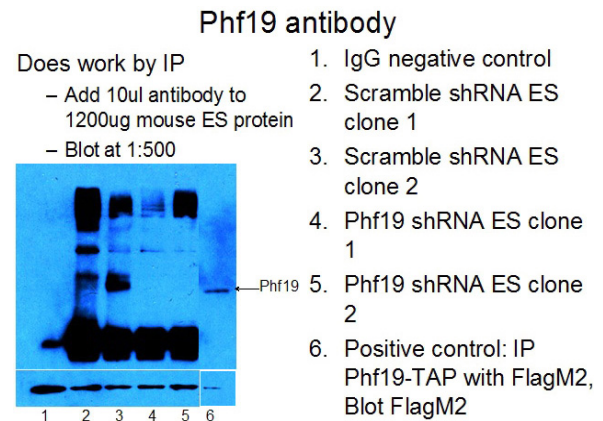
ELISA, IP, IF, WB

## Dilutions

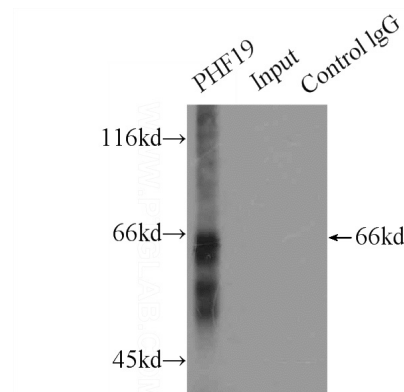
Recommended Dilution:

WB: 1:200-1:1000

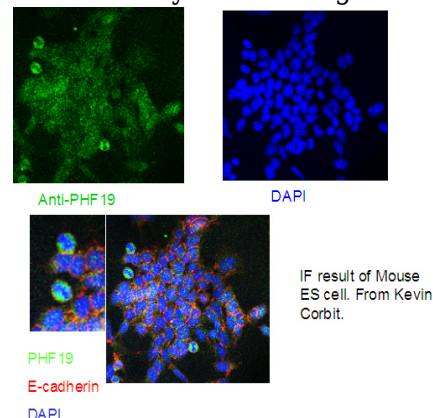
## Validations



IP result of anti-PHF19(Catalog No:113810) in Mouse ES cell from Monika.



IP Result of anti-PHF19 (IP:Catalog No:113810, 4ug; Detection:Catalog No:113810 1:500) with HeLa cells lysate 2000ug.



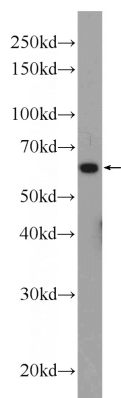
IF result of Mouse ES cell From Kevin Corbit.

# PHF19 antibody



Catalog Number: 113810

---



rat brain tissue were subjected to SDS PAGE  
followed by western blot with Catalog  
No:113810(PHF19 Antibody) at dilution of 1:300