

PHF14 antibody

Catalog Number: 113808

Product name

PHF14 antibody

IP: 1:200-1:2000

IHC: 1:20-1:200

Specificity

Human; other species not tested.

Antibody description

PHF14 Rabbit Polyclonal antibody. Positive IHC detected in human kidney tissue. Positive WB detected in HeLa cells, HEK-293 cells, MDA-MB-453s cells. Positive IP detected in HEK-293 cells. Observed molecular weight by Western-blot: 140-150 kDa

Preparation

This antibody was obtained by immunization of PHF14 recombinant protein (Accession Number: NM_014660). Purification method: Antigen affinity purified.

Formulation

PBS with 0.1% sodium azide and 50% glycerol pH 7.3.

Storage

Store at -20°C. DO NOT ALIQUOT

Clonality

Polyclonal

Ig Type

Rabbit IgG

Applications

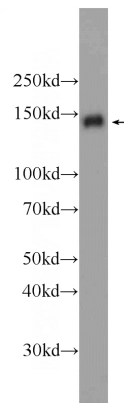
ELISA, WB, IHC, IP

Dilutions

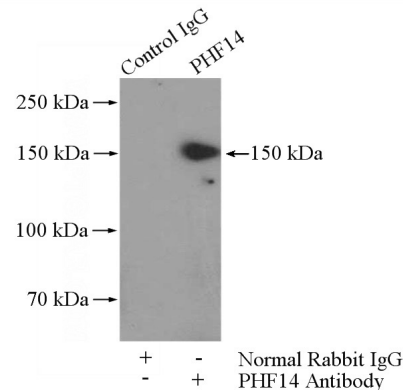
Recommended Dilution:

WB: 1:500-1:5000

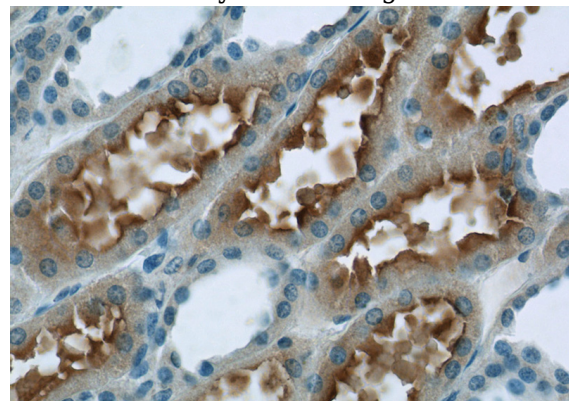
Validations



HeLa cells were subjected to SDS PAGE followed by western blot with Catalog No:113808(PHF14 Antibody) at dilution of 1:1000



IP Result of anti-PHF14 (IP:Catalog No:113808, 4ug; Detection:Catalog No:113808 1:500) with HEK-293 cells lysate 1200ug.



Immunohistochemistry of paraffin-embedded human kidney tissue slide using Catalog

PHF14 antibody



Catalog Number: 113808

No:113808(PHF14 Antibody) at dilution of 1:50 (under 40x lens)