

PGM2L1 antibody



Catalog Number: 113791

Product name

PGM2L1 antibody

Specificity

human, mouse, rat; other species not tested.

Antibody description

PGM2L1 Rabbit Polyclonal antibody. Positive WB detected in mouse skeletal muscle tissue. Positive IHC detected in human gliomas. Observed molecular weight by Western-blot: 72kd

Preparation

This antibody was obtained by immunization of PGM2L1 recombinant protein (Accession Number: NM_173582). Purification method: Antigen affinity purified.

Formulation

PBS with 0.02% sodium azide and 50% glycerol pH 7.3.

Storage

Store at -20°C. DO NOT ALIQUOT

Clonality

Polyclonal

Ig Type

Rabbit IgG

Applications

ELISA, WB, IHC

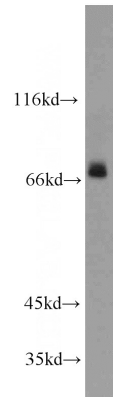
Dilutions

Recommended Dilution:

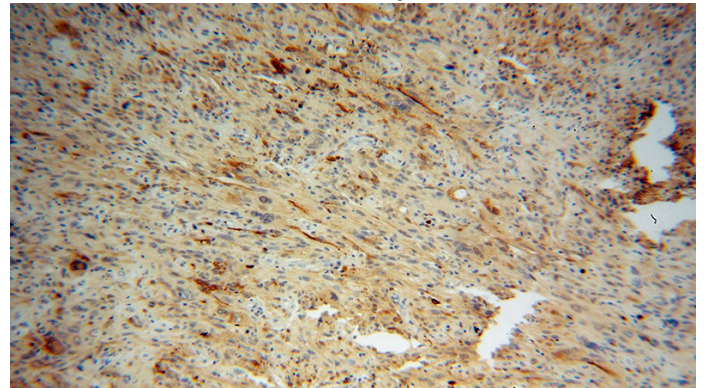
WB: 1:200-1:2000

IHC: 1:20-1:200

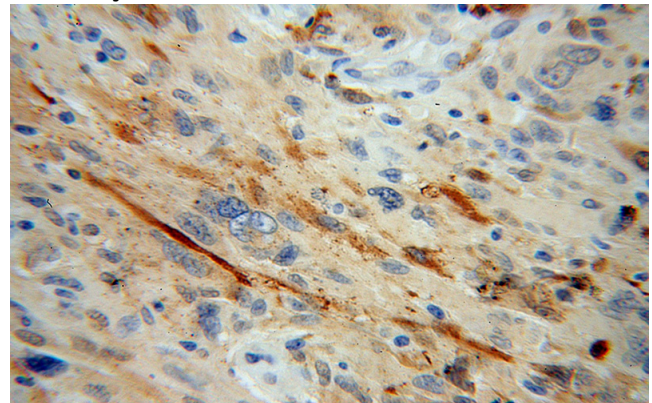
Validations



mouse skeletal muscle tissue were subjected to SDS PAGE followed by western blot with Catalog No:113791(PGM2L1 antibody) at dilution of 1:800



Immunohistochemical of paraffin-embedded human gliomas using Catalog No:113791(PGM2L1 antibody) at dilution of 1:50 (under 10x lens)



Immunohistochemical of paraffin-embedded human gliomas using Catalog No:113791(PGM2L1 antibody) at dilution of 1:50 (under 40x lens)