

PDCD2 antibody



Catalog Number: 113763

Product name

PDCD2 antibody

WB: 1:200-1:2000

IP: 1:200-1:2000

Specificity

Human, Mouse, Zebrafish; other species not tested.

IHC: 1:20-1:200

Antibody description

PDCD2 Rabbit Polyclonal antibody. Positive WB detected in HeLa cells, H7ES cells, mouse liver tissue. Positive IP detected in HeLa cells. Positive IHC detected in human ovary tumor tissue. Observed molecular weight by Western-blot: 37-39kd,45kd

Preparation

This antibody was obtained by immunization of PDCD2 recombinant protein (Accession Number: NM_002598). Purification method: Antigen affinity purified.

Formulation

PBS with 0.1% sodium azide and 50% glycerol pH 7.3.

Storage

Store at -20°C. DO NOT ALIQUOT

Clonality

Polyclonal

Ig Type

Rabbit IgG

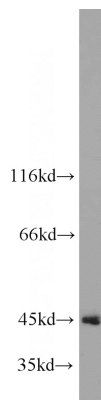
Applications

ELISA, WB, IHC, IP

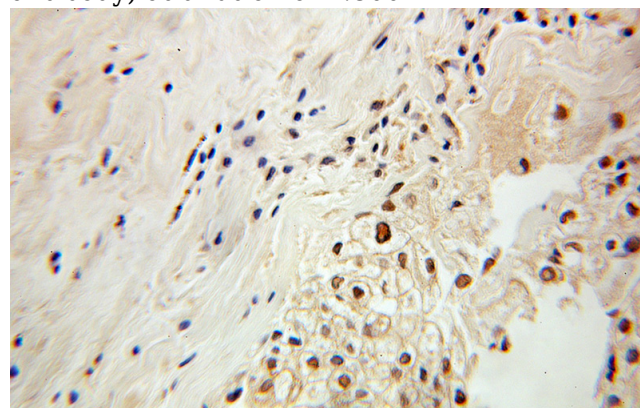
Dilutions

Recommended Dilution:

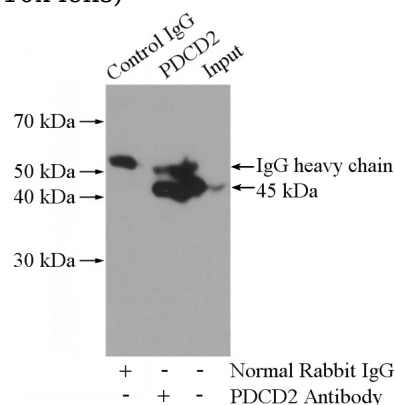
Validations



HeLa cells were subjected to SDS PAGE followed by western blot with Catalog No:113763(PDCD2 antibody) at dilution of 1:800



Immunohistochemical of paraffin-embedded human ovary tumor using Catalog No:113763(PDCD2 antibody) at dilution of 1:100 (under 10x lens)



PDCD2 antibody



Catalog Number: 113763

IP Result of anti-PDCD2 (IP:Catalog No:113763,

4ug; Detection:Catalog No:113763 1:500) with
HeLa cells lysate 2800ug.