

# PCTP antibody



Catalog Number: 113757

## Product name

PCTP antibody

## Specificity

Human; other species not tested.

## Antibody description

PCTP Rabbit Polyclonal antibody. Positive WB detected in human liver tissue, human kidney tissue, K-562 cells. Positive IHC detected in human ovary tumor tissue. Observed molecular weight by Western-blot: 25-27 kDa

## Preparation

This antibody was obtained by immunization of PCTP recombinant protein (Accession Number: NM\_021213). Purification method: Antigen affinity purified.

## Formulation

PBS with 0.1% sodium azide and 50% glycerol pH 7.3.

## Storage

Store at -20°C. DO NOT ALIQUOT

## Clonality

Polyclonal

## Ig Type

Rabbit IgG

## Applications

ELISA, WB, IHC

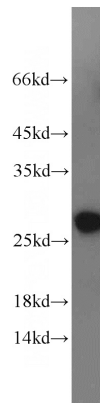
## Dilutions

Recommended Dilution:

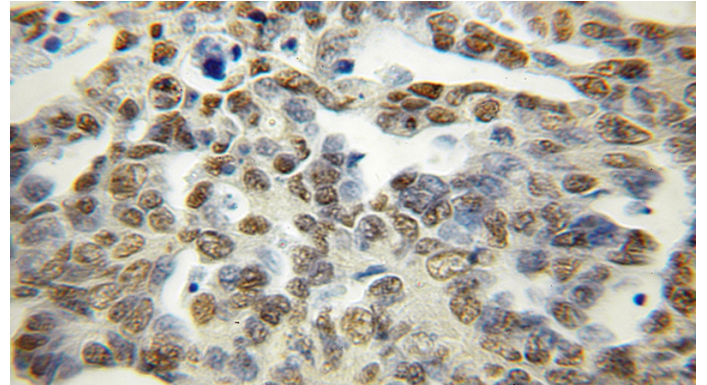
WB: 1:200-1:2000

IHC: 1:20-1:200

## Validations



human liver tissue were subjected to SDS PAGE followed by western blot with Catalog No:113757(PCTP antibody) at dilution of 1:300



Immunohistochemical of paraffin-embedded human ovary tumor using Catalog No:113757(PCTP antibody) at dilution of 1:50 (under 10x lens)