

# PCOLCE2 antibody



Catalog Number: 113748

---

## Product name

PCOLCE2 antibody

## Specificity

Human, Mouse, Rat; other species not tested.

## Antibody description

PCOLCE2 Rabbit Polyclonal antibody. Positive IHC detected in human prostate cancer tissue.

## Preparation

This antibody was obtained by immunization of PCOLCE2 recombinant protein (Accession Number: BC006265). Purification method: Antigen affinity purified.

## Formulation

PBS with 0.1% sodium azide and 50% glycerol pH 7.3.

## Storage

Store at -20°C. DO NOT ALIQUOT

## Clonality

Polyclonal

## Ig Type

Rabbit IgG

## Applications

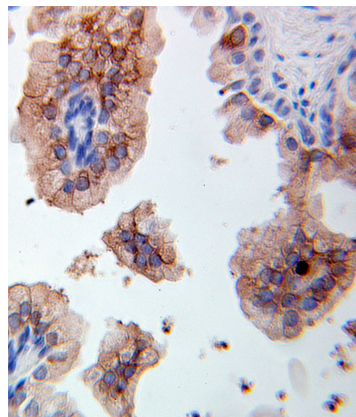
ELISA, IHC

## Dilutions

Recommended Dilution:

IHC: 1:20-1:200

## Validations



Immunohistochemical of paraffin-embedded human prostate cancer using Catalog No:113748(PCOLCE2 antibody) at dilution of 1:100 (under 25x lens)