

# persephin-Specific antibody



Catalog Number: 113723

## Product name

persephin-Specific antibody

## Specificity

Human; other species not tested.

## Antibody description

persephin-Specific Rabbit Polyclonal antibody.  
Positive IHC detected in human brain tissue.  
Positive IF detected in SH-SY5Y cells. Positive WB detected in SH-SY5Y cells, HepG2 cells. Observed molecular weight by Western-blot: 17 kDa

## Preparation

This antibody was obtained by immunization of Peptide (Accession Number: NM\_004158).  
Purification method: Antigen affinity purified.

## Formulation

PBS with 0.02% sodium azide and 50% glycerol pH 7.3.

## Storage

Store at -20°C. DO NOT ALIQUOT

## Clonality

Polyclonal

## Ig Type

Rabbit IgG

## Applications

ELISA, WB, IHC, IF

## Dilutions

Recommended Dilution:

WB: 1:200-1:2000

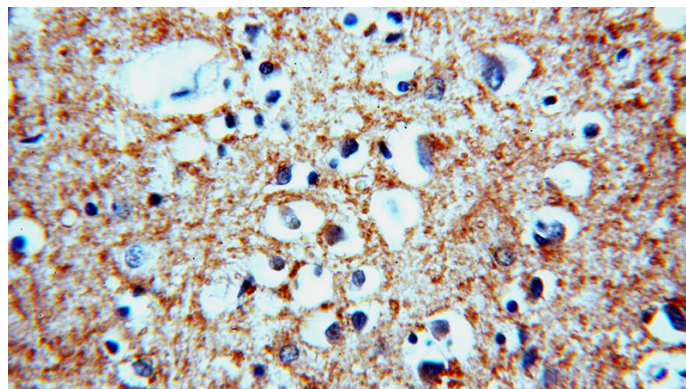
IHC: 1:20-1:200

IF: 1:50-1:500

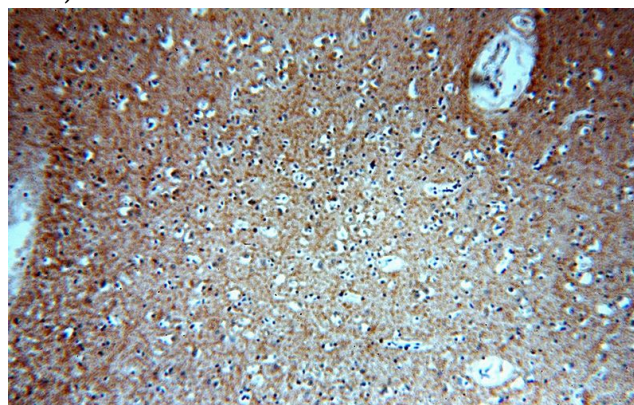
## Validations



SH-SY5Y cells were subjected to SDS PAGE followed by western blot with Catalog No:113723(PSPN-Specific antibody) at dilution of 1:500



Immunohistochemical of paraffin-embedded human brain using Catalog No:113723(PSPN-Specific antibody) at dilution of 1:50 (under 40x lens)



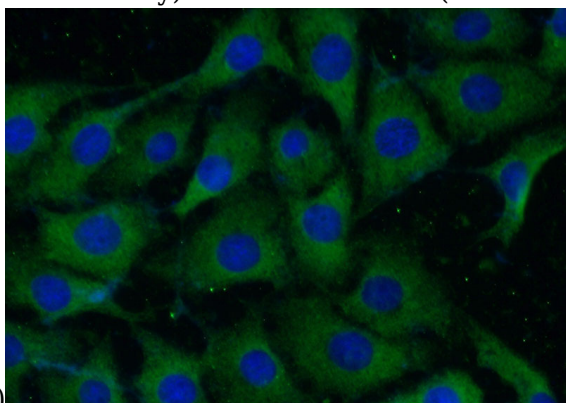
Immunohistochemical of paraffin-embedded human brain using Catalog No:113723(PSPN-

# persephin-Specific antibody

Catalog Number: 113723

---

Specific antibody) at dilution of 1:50 (under 10x



Immuno-fluorescent analysis of (-20oc Ethanol) fixed SH-SY5Y cells using Catalog No:113723(PSPN-Specific Antibody) at dilution of 1:50 and Alexa Fluor 488-conjugated AffiniPure Goat Anti-Rabbit IgG(H+L)

lens)