

PDE9A antibody



Catalog Number: 113671

Product name

PDE9A antibody

Specificity

Human, Mouse, Rat; other species not tested.

Antibody description

PDE9A Rabbit Polyclonal antibody. Positive WB detected in mouse testis tissue, mouse skeletal muscle tissue. Positive IHC detected in human prostate cancer tissue. Observed molecular weight by Western-blot: 50 kDa

Preparation

This antibody was obtained by immunization of PDE9A recombinant protein (Accession Number: NM_001001567). Purification method: Antigen affinity purified.

Formulation

PBS with 0.1% sodium azide and 50% glycerol pH 7.3.

Storage

Store at -20°C. DO NOT ALIQUOT

Clonality

Polyclonal

Ig Type

Rabbit IgG

Applications

ELISA, IHC, WB

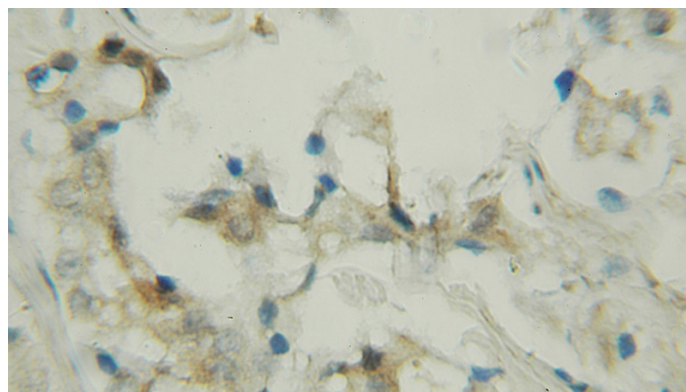
Dilutions

Recommended Dilution:

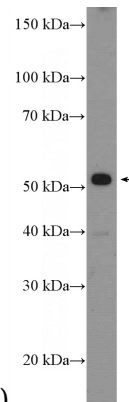
WB: 1:200-1:1000

IHC: 1:20-1:200

Validations



Immunohistochemical of paraffin-embedded human prostate cancer using Catalog No:113671(PDE9A antibody) at dilution of 1:50



(under 10x lens)

mouse testis tissue were subjected to SDS PAGE followed by western blot with Catalog No:113671(PDE9A Antibody) at dilution of 1:300