

PDE6B antibody

Catalog Number: 113666

Product name

PDE6B antibody

WB: 1:500-1:5000

IP: 1:500-1:5000

Immunogen

[Human PDE6B Recombinant protein \(GST tag\)](#)

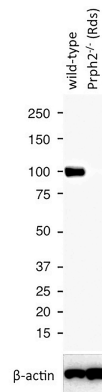
Validations

Specificity

Human, Mouse; other species not tested.

Antibody description

PDE6B Rabbit Polyclonal antibody. Positive WB detected in mouse eye tissue, A549 cells. Positive IP detected in Y79 cells. Observed molecular weight by Western-blot: 98 kDa



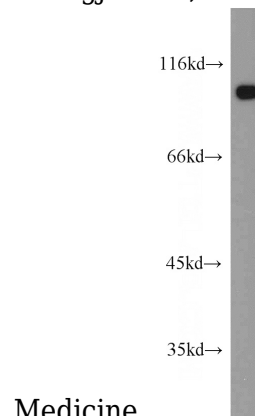
Preparation

This antibody was obtained by immunization of PDE6B recombinant protein (Accession Number: NM_001145291). Purification method: Antigen affinity purified.

WB results of PDE6B antibody (Catalog No:113666) with WT mouse Eye and Prph2 (Rds) mutant mouse Eye (Negative control). Courtesy of Seongjin Seo, PhD, University of Iowa College of

Formulation

PBS with 0.02% sodium azide and 50% glycerol pH 7.3.



Storage

Store at -20°C. DO NOT ALIQUOT

Medicine.

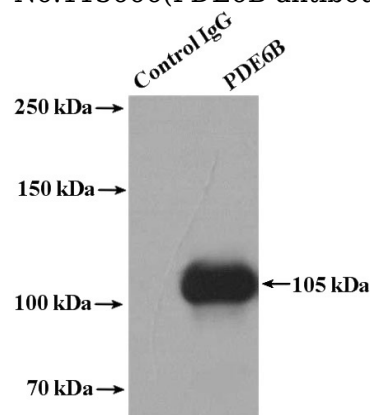
Clonality

Polyclonal

mouse eye tissue were subjected to SDS PAGE followed by western blot with Catalog No:113666(PDE6B antibody) at dilution of 1:1000

Ig Type

Rabbit IgG



Applications

ELISA, WB, IP

Dilutions

Recommended Dilution:

PDE6B antibody



Catalog Number: 113666

IP Result of anti-PDE6B (IP:Catalog No:113666,

4ug; Detection:Catalog No:113666 1:1000) with Y79 cells lysate 2000ug.