

# PDE4D antibody



Catalog Number: 113663

## Product name

PDE4D antibody

## Specificity

Human, Mouse, Rat; other species not tested.

## Antibody description

PDE4D Rabbit Polyclonal antibody. Positive WB detected in mouse brain tissue, mouse pancreas tissue. Positive IHC detected in mouse colon tissue. Observed molecular weight by Western-blot: 91 kDa

## Preparation

This antibody was obtained by immunization of PDE4D recombinant protein (Accession Number: NM\_001197223). Purification method: Antigen affinity purified.

## Formulation

PBS with 0.02% sodium azide and 50% glycerol pH 7.3.

## Storage

Store at -20°C. DO NOT ALIQUOT

## Clonality

Polyclonal

## Ig Type

Rabbit IgG

## Applications

ELISA, WB, IHC

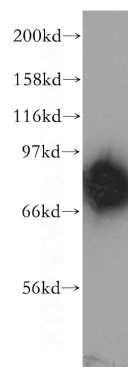
## Dilutions

Recommended Dilution:

WB: 1:500-1:5000

IHC: 1:50-1:500

## Validations



mouse brain tissue were subjected to SDS PAGE followed by western blot with Catalog No:113663(PDE4D antibody) at dilution of 1:400