

PDE4A antibody

Catalog Number: 113661

Product name

PDE4A antibody

Immunogen

[Human PDE4A Recombinant protein \(His tag\)](#)

Specificity

Human, Mouse, Rat; other species not tested.

Antibody description

PDE4A Rabbit Polyclonal antibody. Positive FC detected in SH-SY5Y cells. Positive IHC detected in human placenta tissue. Positive WB detected in human brain tissue. Positive IP detected in mouse brain tissue. Observed molecular weight by Western-blot: 125-130kd

Preparation

This antibody was obtained by immunization of PDE4A recombinant protein (Accession Number: NM_006202). Purification method: Antigen affinity purified.

Formulation

PBS with 0.02% sodium azide and 50% glycerol pH 7.3.

Storage

Store at -20°C. DO NOT ALIQUOT

Clonality

Polyclonal

Ig Type

Rabbit IgG

Applications

ELISA, WB, IHC, FC, IP

Dilutions

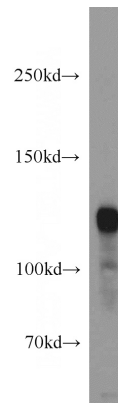
Recommended Dilution:

WB: 1:500-1:5000

IP: 1:200-1:1000

IHC: 1:20-1:200

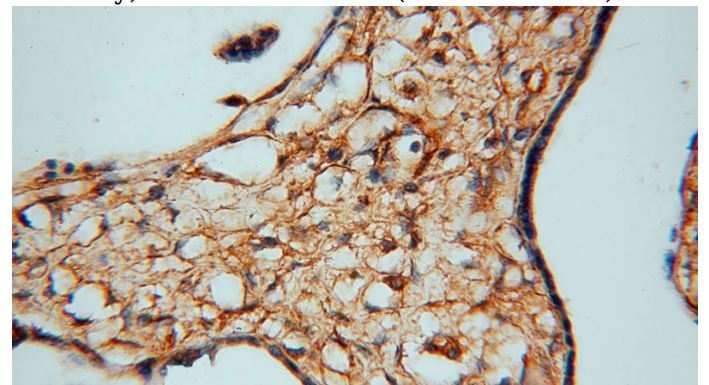
Validations



human brain tissue were subjected to SDS PAGE followed by western blot with Catalog No:113661(PDE4A antibody) at dilution of 1:1000



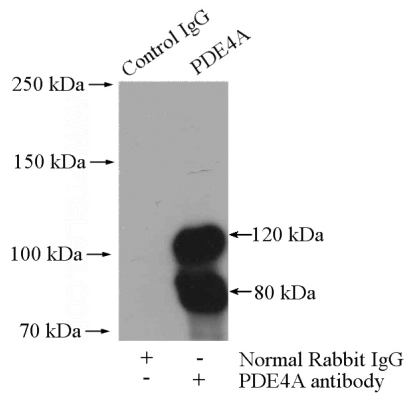
Immunohistochemical of paraffin-embedded human placenta using Catalog No:113661(PDE4A antibody) at dilution of 1:50 (under 10x lens)



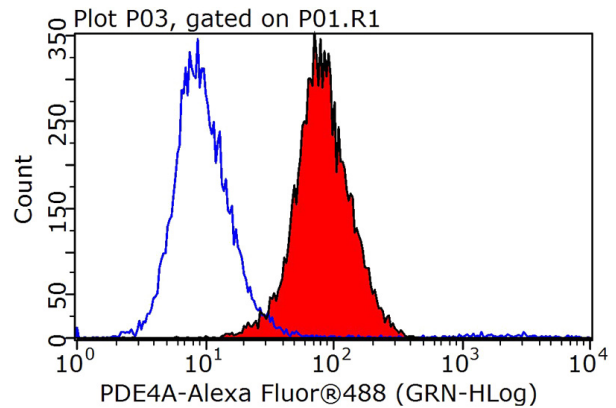
PDE4A antibody

Catalog Number: 113661

Immunohistochemical of paraffin-embedded human placenta using Catalog No:113661(PDE4A antibody) at dilution of 1:50 (under 40x lens)



IP Result of anti-PDE4A (IP:Catalog No:113661, 4ug; Detection:Catalog No:113661 1:300) with mouse brain tissue lysate 4000ug.



1X10⁶ SH-SY5Y cells were stained with 0.2ug PDE4A antibody (Catalog No:113661, red) and control antibody (blue). Fixed with 90% MeOH blocked with 3% BSA (30 min). Alexa Fluor 488-conjugated AffiniPure Goat Anti-Rabbit IgG(H+L) with dilution 1:1000.