

PAX6 antibody

Catalog Number: 113607

Product name

PAX6 antibody

WB: 1:200-1:2000

IHC: 1:20-1:200

Specificity

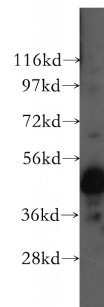
Human, Mouse, Rat; other species not tested.

IF: 1:50-1:500

Antibody description

PAX6 Rabbit Polyclonal antibody. Positive FC detected in SH-SY5Y cells. Positive IF detected in HeLa cells. Positive IHC detected in human brain tissue, human pancreas tissue. Positive WB detected in Y79 cells, human stomach tissue. Observed molecular weight by Western-blot: 47 kDa

Validations



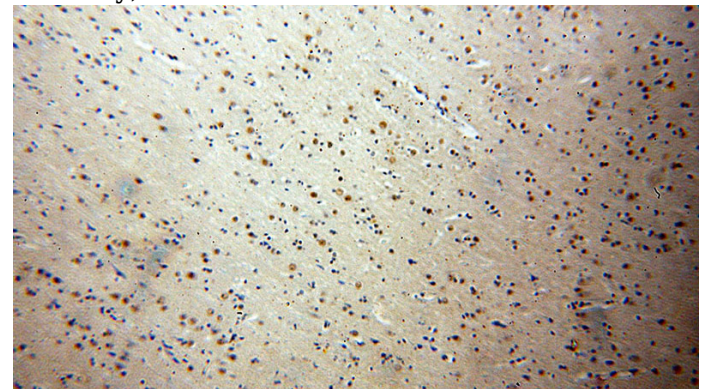
Preparation

This antibody was obtained by immunization of PAX6 recombinant protein (Accession Number: NM_001368891). Purification method: Antigen affinity purified.

Y79 cells were subjected to SDS PAGE followed by western blot with Catalog No:113607(PAX6 antibody) at dilution of 1:500

Formulation

PBS with 0.1% sodium azide and 50% glycerol pH 7.3.



Storage

Store at -20°C. DO NOT ALIQUOT

Clonality

Polyclonal

Ig Type

Rabbit IgG

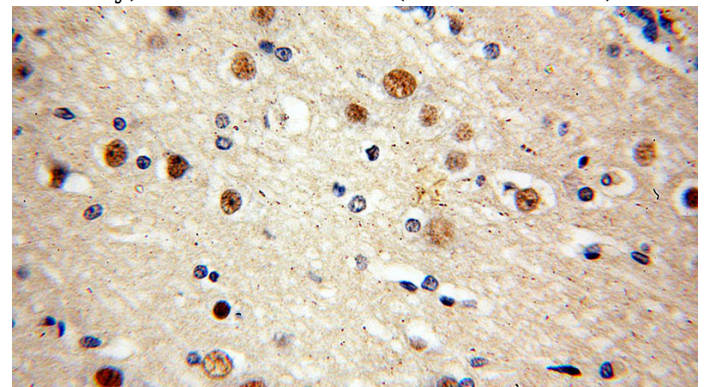
Applications

ELISA, IHC, WB, IF, FC

Dilutions

Recommended Dilution:

Immunohistochemical of paraffin-embedded human brain using Catalog No:113607(PAX6 antibody) at dilution of 1:50 (under 10x lens)

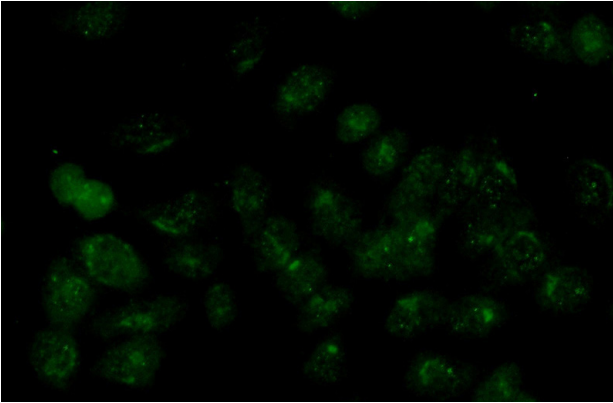


Immunohistochemical of paraffin-embedded

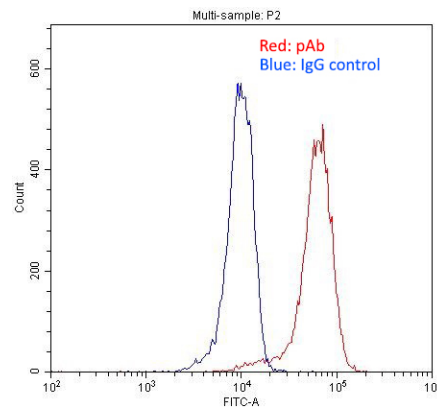
PAX6 antibody

Catalog Number: 113607

human brain using Catalog No:113607(PAX6 antibody) at dilution of 1:50 (under 40x lens)



Immunofluorescent analysis of (-20oc Ethanol) fixed HeLa cells using Catalog No:113607(PAX6 Antibody) at dilution of 1:100 and Alexa Fluor 488-conjugated AffiniPure Goat Anti-Rabbit IgG(H+L)



1X10⁶ SH-SY5Y cells were stained with 0.2ug PAX6 antibody (Catalog No:113607, red) and control antibody (blue). Fixed with 4% PFA blocked with 3% BSA (30 min). Alexa Fluor 488-conjugated AffiniPure Goat Anti-Rabbit IgG(H+L) with dilution 1:1500.