

# PARP2 antibody



Catalog Number: 113592

## Product name

Polyclonal

PARP2 antibody

## Ig Type

## Specificity

Rabbit IgG

Human, Mouse; other species not tested.

## Applications

## Antibody description

ELISA, WB

PARP2 Rabbit Polyclonal antibody. Positive WB detected in human brain tissue. Observed molecular weight by Western-blot: 46 kDa

## Dilutions

Recommended Dilution:

WB: 1:200-1:2000

## Preparation

This antibody was obtained by immunization of Peptide (Accession Number: NM\_005484). Purification method: Antigen affinity purified.

## Validations

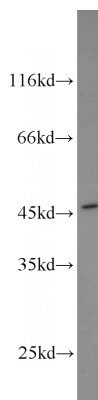
## Formulation

PBS with 0.1% sodium azide and 50% glycerol pH 7.3.

## Storage

Store at -20°C. DO NOT ALIQUOT

## Clonality



human brain tissue were subjected to SDS PAGE followed by western blot with Catalog No:113592(PARP2 antibody) at dilution of 1:800