

PARP15 antibody



Catalog Number: 113591

Product name

PARP15 antibody

Specificity

human; other species not tested.

Antibody description

PARP15 Rabbit Polyclonal antibody. Positive WB detected in A431 cells, Raji cells. Observed molecular weight by Western-blot: 50kd

Preparation

This antibody was obtained by immunization of PARP15 recombinant protein (Accession Number: NM_152615). Purification method: Antigen affinity purified.

Formulation

PBS with 0.02% sodium azide and 50% glycerol pH 7.3.

Storage

Store at -20°C. DO NOT ALIQUOT

Clonality

Polyclonal

Ig Type

Rabbit IgG

Applications

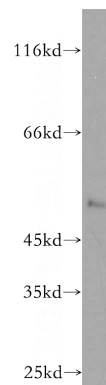
ELISA, WB

Dilutions

Recommended Dilution:

WB: 1:200-1:2000

Validations



A431 cells were subjected to SDS PAGE followed by western blot with Catalog No:113591(PARP15 antibody) at dilution of 1:400