

# Parkin antibody



Catalog Number: 113585

## Product name

Parkin antibody

## Specificity

Human, Mouse, Rat; other species not tested.

## Antibody description

Parkin Rabbit Polyclonal antibody. Positive WB detected in mouse brain tissue, C6 cells, SH-SY5Y cells. Positive IF detected in SH-SY5Y cells. Observed molecular weight by Western-blot: 52 kDa

## Preparation

This antibody was obtained by immunization of Parkin recombinant protein (Accession Number: BC022014). Purification method: Antigen affinity purified.

## Formulation

PBS with 0.1% sodium azide and 50% glycerol pH 7.3.

## Storage

Store at -20°C. DO NOT ALIQUOT

## Clonality

Polyclonal

## Ig Type

Rabbit IgG

## Applications

ELISA, WB, IF

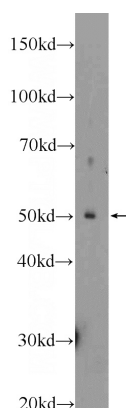
## Dilutions

Recommended Dilution:

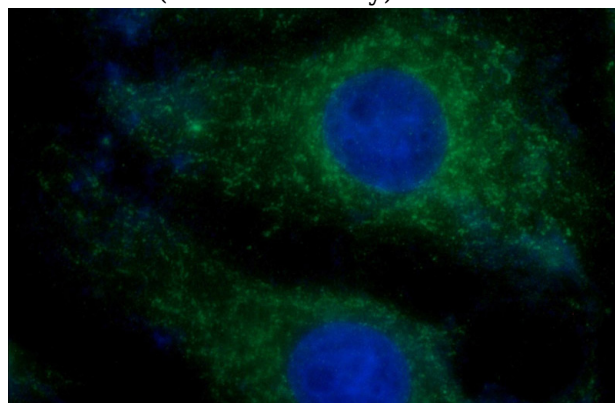
WB: 1:200-1:1000

IF: 1:20-1:200

## Validations



mouse brain tissue were subjected to SDS PAGE followed by western blot with Catalog No:113585(Parkin Antibody) at dilution of 1:300



Immunofluorescent analysis of SH-SY5Y cells using Catalog No:113585(Parkin Antibody) at dilution of 1:50 and Alexa Fluor 488-conjugated AffiniPure Goat Anti-Rabbit IgG(H+L)