

PANK2 antibody

Catalog Number: 113570

Product name

PANK2 antibody

Specificity

Human, Mouse, Rat; other species not tested.

Antibody description

PANK2 Rabbit Polyclonal antibody. Positive IF detected in HepG2 cells. Positive IHC detected in human lung cancer tissue, human liver tissue. Positive IP detected in mouse brain tissue. Positive WB detected in HeLa cells, HepG2 cells, human brain tissue, MCF7 cells, mouse brain tissue, mouse lung tissue. Observed molecular weight by Western-blot: 59 kDa, 48 kDa

Preparation

This antibody was obtained by immunization of PANK2 recombinant protein (Accession Number: BC009421). Purification method: Antigen affinity purified.

Formulation

PBS with 0.1% sodium azide and 50% glycerol pH 7.3.

Storage

Store at -20°C. DO NOT ALIQUOT

Clonality

Polyclonal

Ig Type

Rabbit IgG

Applications

ELISA, WB, IHC, IP, IF

Dilutions

Recommended Dilution:

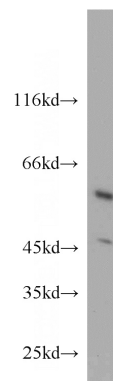
WB: 1:200-1:2000

IP: 1:200-1:2000

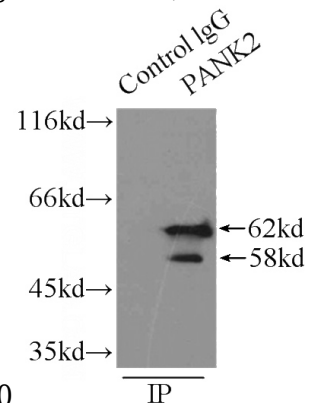
IHC: 1:10-1:100

IF: 1:10-1:100

Validations



HeLa cells were subjected to SDS PAGE followed by western blot with Catalog No:113570(PANK2

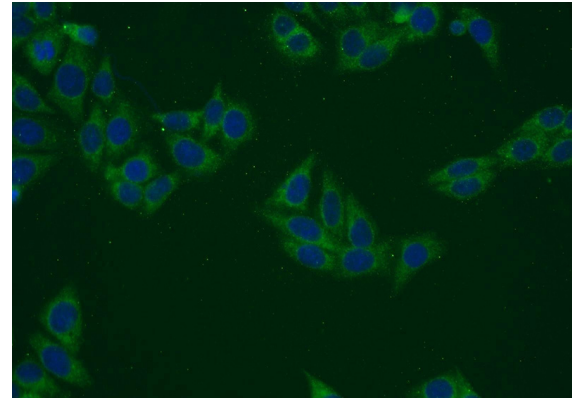
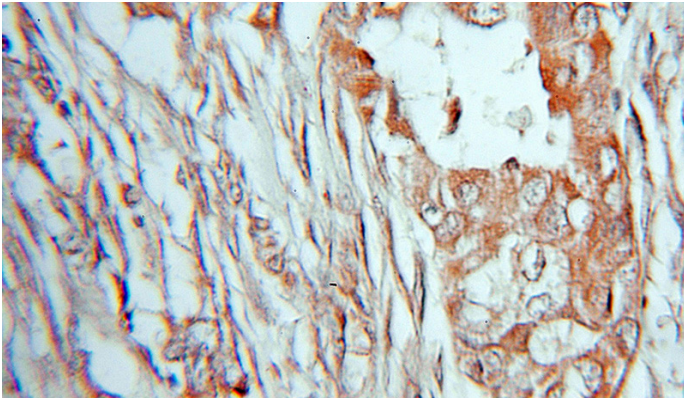


antibody) at dilution of 1:100

IP Result of anti-PANK2 (IP:Catalog No:113570, 3ug; Detection:Catalog No:113570 1:800) with mouse brain tissue lysate 9500ug.

PANK2 antibody

Catalog Number: 113570



Immunohistochemical of paraffin-embedded human lung cancer using Catalog No:113570(PANK2 antibody) at dilution of 1:10 (under 10x lens)

Immunofluorescent analysis of HepG2 cells using Catalog No:113570(PANK2 Antibody) at dilution of 1:25 and Alexa Fluor 488-conjugated AffiniPure Goat Anti-Rabbit IgG(H+L)