

# PAN2 antibody



Catalog Number: 113567

## Product name

PAN2 antibody

Recommended Dilution:

WB: 1:200-1:2000

## Specificity

Human, Mouse, Rat; other species not tested.

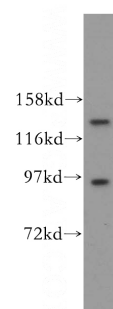
IHC: 1:20-1:200

IF: 1:50-1:500

## Antibody description

PAN2 Rabbit Polyclonal antibody. Positive IHC detected in human heart tissue, human brain tissue, human kidney tissue, human liver tissue, human placenta tissue, human spleen tissue, human testis tissue. Positive IF detected in NIH/3T3 cells. Positive WB detected in NIH/3T3 cells, HepG2 cells. Observed molecular weight by Western-blot: 127 kDa

## Validations



## Preparation

This antibody was obtained by immunization of PAN2 recombinant protein (Accession Number: NM\_001394700). Purification method: Antigen affinity purified.

NIH/3T3 cells were subjected to SDS PAGE followed by western blot with Catalog No:113567(PAN2 antibody) at dilution of 1:300

## Formulation

PBS with 0.02% sodium azide and 50% glycerol pH 7.3.

## Storage

Store at -20°C. DO NOT ALIQUOT

## Clonality

Polyclonal

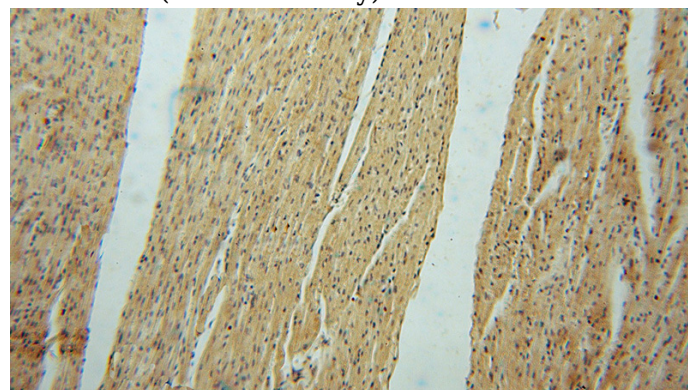
## Ig Type

Rabbit IgG

## Applications

ELISA, WB, IHC, IF

## Dilutions

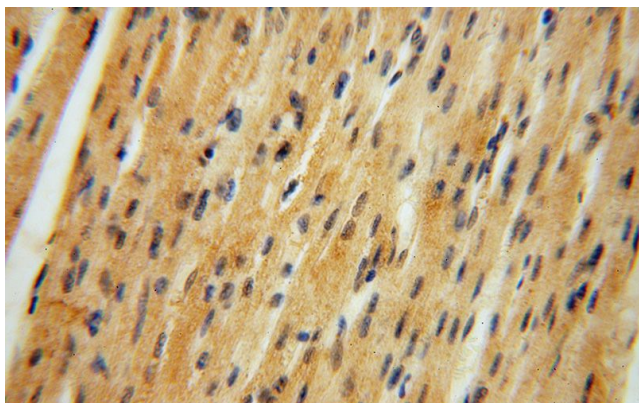


Immunohistochemical of paraffin-embedded human heart using Catalog No:113567(PAN2 antibody) at dilution of 1:50 (under 10x lens)

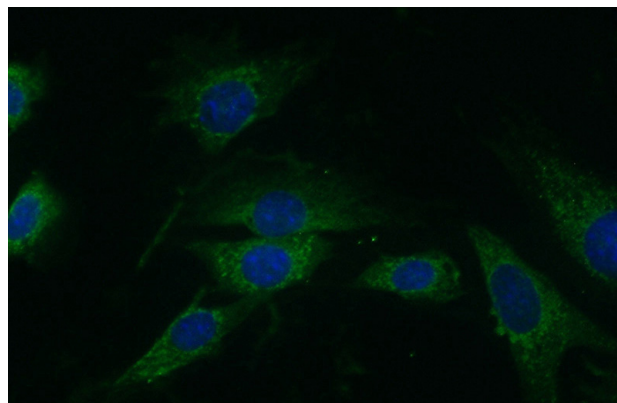
# PAN2 antibody

Catalog Number: 113567

---



Immunohistochemical of paraffin-embedded human heart using Catalog No:113567(PAN2 antibody) at dilution of 1:50 (under 40x lens)



Immunofluorescent analysis of (10% Formaldehyde) fixed NIH/3T3 cells using Catalog No:113567(PAN2 Antibody) at dilution of 1:50 and Alexa Fluor 488-conjugated AffiniPure Goat Anti-Rabbit IgG(H+L)