

# P53 antibody

Catalog Number: 113553

## Product name

P53 antibody

## Specificity

Human, Rat, Mouse; other species not tested.

## Antibody description

P53 Rabbit Polyclonal antibody. Positive IF detected in HepG2 cells. Positive IHC detected in human endometrial cancer tissue, human kidney tissue, human lung cancer tissue, human lung tissue, human ovary tumor tissue, human placenta tissue, human skin tissue, human testis tissue. Positive WB detected in MCF-7 cells, A431 cells, MCF7 cells, mouse colon tissue, rat colon tissue. Positive IP detected in A431 cells. Observed molecular weight by Western-blot: 53 kDa

## Preparation

This antibody was obtained by immunization of P53 recombinant protein (Accession Number: NM\_001126112). Purification method: Antigen affinity purified.

## Formulation

PBS with 0.1% sodium azide and 50% glycerol pH 7.3.

## Storage

Store at -20°C. DO NOT ALIQUOT

## Clonality

Polyclonal

## Ig Type

Rabbit IgG

## Applications

ELISA, IHC, IP, WB, IF

## Dilutions

Recommended Dilution:

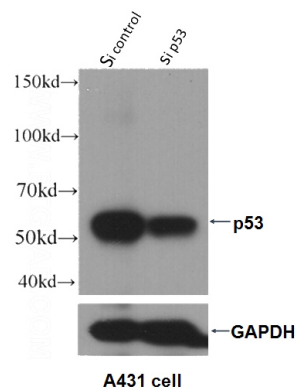
WB: 1:500-1:5000

IP: 1:500-1:5000

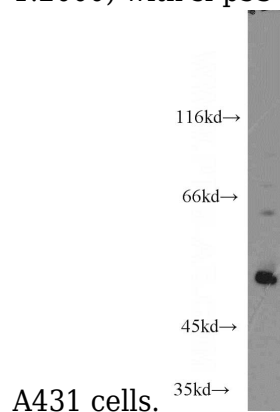
IHC: 1:20-1:200

IF: 1:20-1:200

## Validations



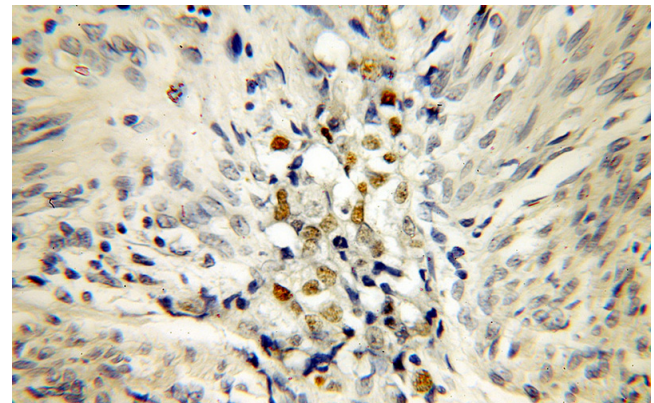
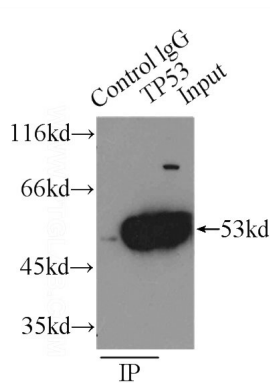
WB result of P53 antibody (Catalog No:113553, 1:2000) with si-p53 and si-Control transfected



MCF7 cells were subjected to SDS PAGE followed by western blot with Catalog No:113553(P53 antibody) at dilution of 1:1000

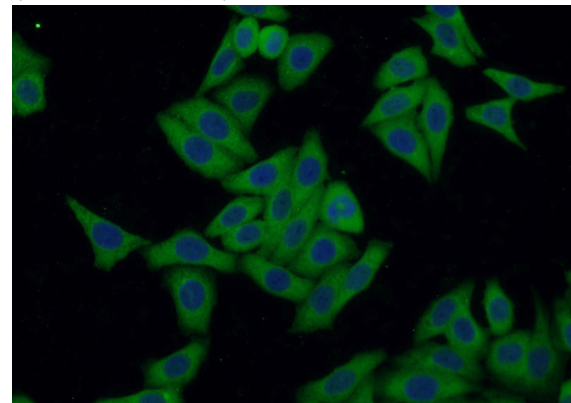
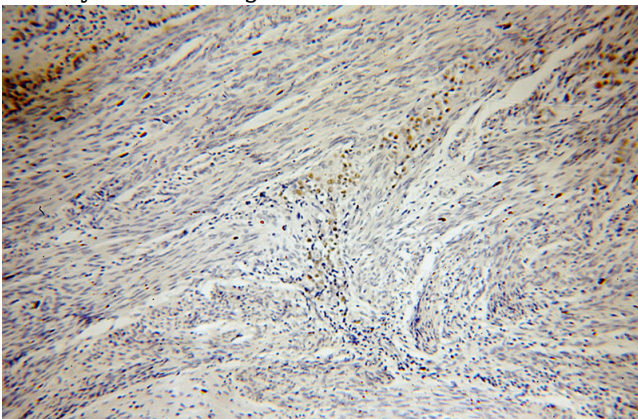
# P53 antibody

Catalog Number: 113553



IP Result of anti-P53 (IP:Catalog No:113553, 4ug; Detection:Catalog No:113553 1:1000) with A431 cells lysate 3000ug.

Immunohistochemical of paraffin-embedded human endometrial cancer using Catalog No:113553(P53 antibody) at dilution of 1:100 (under 40x lens)



Immunohistochemical of paraffin-embedded human endometrial cancer using Catalog No:113553(P53 antibody) at dilution of 1:100 (under 10x lens)

Immunofluorescent analysis of HepG2 cells using Catalog No:113553(P53 Antibody) at dilution of 1:50 and Alexa Fluor 488-conjugated AffiniPure Goat Anti-Rabbit IgG(H+L)