

# P27; KIP1 antibody

Catalog Number: 113541

## Product name

P27; KIP1 antibody

## Specificity

Human, Mouse; other species not tested.

## Antibody description

P27; KIP1 Rabbit Polyclonal antibody. Positive WB detected in NIH/3T3 cells, HepG2 cells. Positive IP detected in NIH/3T3 cells. Observed molecular weight by Western-blot: 27 kDa

## Preparation

This antibody was obtained by immunization of P27; KIP1 recombinant protein (Accession Number: NM\_004064). Purification method: Antigen affinity purified.

## Formulation

PBS with 0.1% sodium azide and 50% glycerol pH 7.3.

## Storage

Store at -20°C. DO NOT ALIQUOT

## Clonality

Polyclonal

## Ig Type

Rabbit IgG

## Applications

ELISA, WB, IP

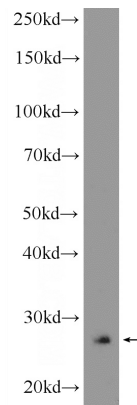
## Dilutions

Recommended Dilution:

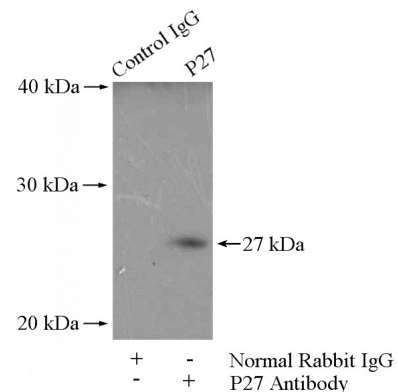
WB: 1:200-1:2000

IP: 1:200-1:1000

## Validations



NIH/3T3 cells were subjected to SDS PAGE followed by western blot with Catalog No:113541(P27; KIP1 Antibody) at dilution of



1:600

IP Result of anti-P27; KIP1 (IP:Catalog No:113541, 4ug; Detection:Catalog No:113541 1:300) with NIH/3T3 cells lysate 1600ug.