

P21;CDKN1A antibody



Catalog Number: 113540

Product name

P21;CDKN1A antibody

Specificity

Human, Mouse, Rat; other species not tested.

Antibody description

P21;CDKN1A Rabbit Polyclonal antibody. Positive FC detected in HeLa cells. Positive IHC detected in human kidney tissue, human breast cancer tissue, rat brain tissue. Positive IF detected in myotome of a somite at E11.5 tissue, MCF-7 cells. Positive IP detected in MCF-7 cells. Positive WB detected in MCF-7 cells, HEK-293 cells, HeLa cells, HUVEC cells. Observed molecular weight by Western-blot: 21 kDa

Preparation

This antibody was obtained by immunization of P21;CDKN1A recombinant protein (Accession Number: NM_001220777). Purification method: Antigen affinity purified.

Formulation

PBS with 0.02% sodium azide and 50% glycerol pH 7.3.

Storage

Store at -20°C. DO NOT ALIQUOT

Clonality

Polyclonal

Ig Type

Rabbit IgG

Applications

ELISA, IF, WB, IHC, FC, IP

Dilutions

Recommended Dilution:

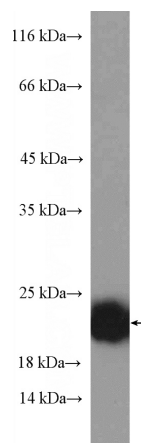
WB: 1:500-1:5000

IP: 1:200-1:1000

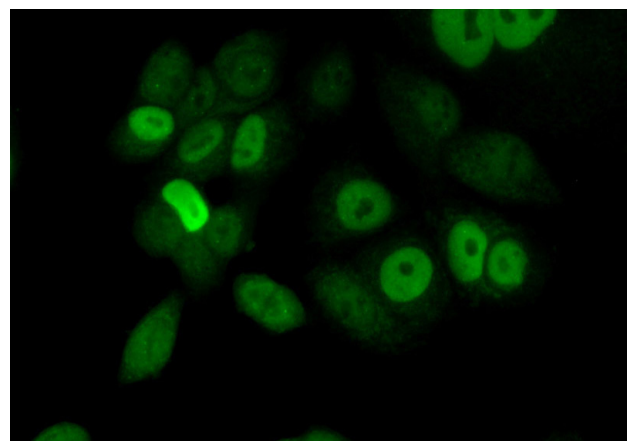
IHC: 1:20-1:200

IF: 1:20-1:200

Validations



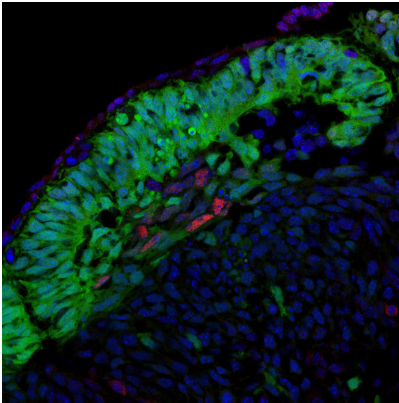
MCF-7 cells were subjected to SDS PAGE followed by western blot with Catalog No:113540(P21;CDKN1A Antibody) at dilution of 1:1000



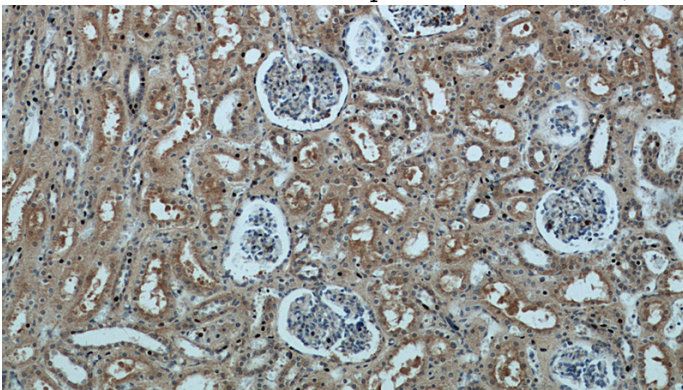
Immunofluorescent analysis of (10% Formaldehyde) fixed MCF-7 cells using Catalog No:113540(P21;CDKN1A Antibody) at dilution of 1:50 and Alexa Fluor 488-conjugated AffiniPure Goat Anti-Rabbit IgG(H+L)

P21;CDKN1A antibody

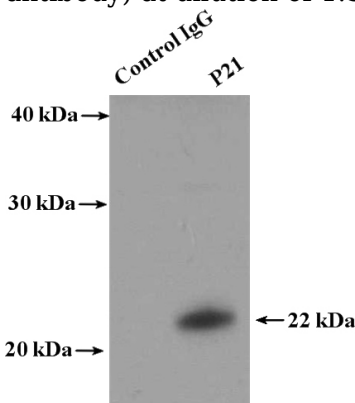
Catalog Number: 113540



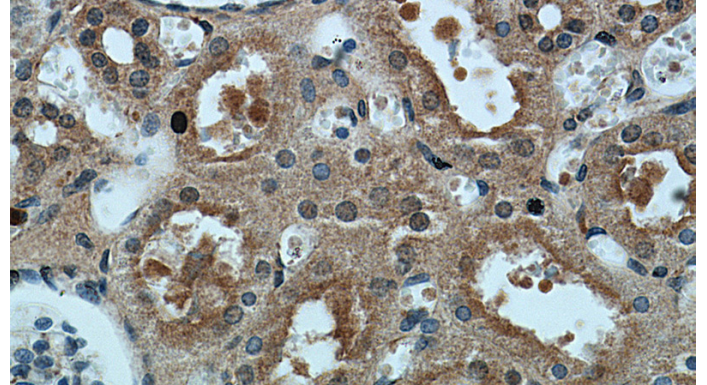
IF result of anti-p21 (CDKN1A, Catalog No:113540) in the myotome of a somite at E11.5 by Dr. Zalc A. and Dr. Relaix F. (Red = p21; Green=Pax3 from a GFP reporter; Bleu=DAPI)



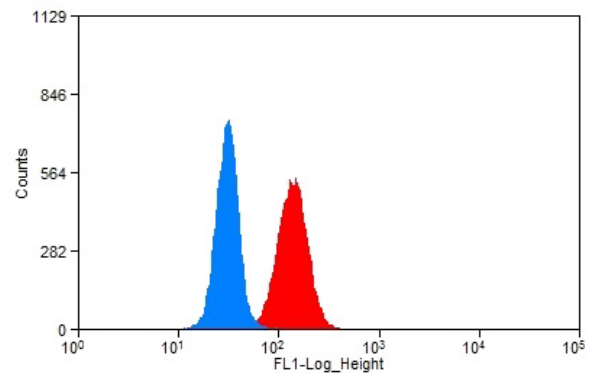
Immunohistochemical of paraffin-embedded human kidney using Catalog No:113540(P21 antibody) at dilution of 1:50 (under 10x lens)



IP Result of anti-P21;CDKN1A (IP:Catalog No:113540, 4ug; Detection:Catalog No:113540 1:300) with MCF-7 cells lysate 3200ug.



Immunohistochemical of paraffin-embedded human kidney using Catalog No:113540(P21 antibody) at dilution of 1:50 (under 40x lens)



1X10⁶ HeLa cells were stained with 0.2ug P21;CDKN1A antibody (Catalog No:113540, red) and control antibody (blue). Fixed with 90% MeOH blocked with 3% BSA (30 min). Alexa Fluor 488-conjugated AffiniPure Goat Anti-Rabbit IgG(H+L) with dilution 1:1500.