

OTX2 antibody

Catalog Number: 113519

Product name

OTX2 antibody

IP: 1:500-1:5000

IHC: 1:20-1:200

Specificity

Human, Mouse, Rat; other species not tested.

Antibody description

OTX2 Rabbit Polyclonal antibody. Positive IHC detected in human gliomas tissue. Positive FC detected in hESC cells. Positive IP detected in Y79 cells. Positive WB detected in Y79 cells. Observed molecular weight by Western-blot: 32kd

Preparation

This antibody was obtained by immunization of OTX2 recombinant protein (Accession Number: NM_021728). Purification method: Antigen affinity purified.

Formulation

PBS with 0.02% sodium azide and 50% glycerol pH 7.3.

Storage

Store at -20°C. DO NOT ALIQUOT

Clonality

Polyclonal

Ig Type

Rabbit IgG

Applications

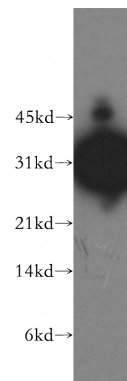
ELISA, WB, IHC, FC, IP

Dilutions

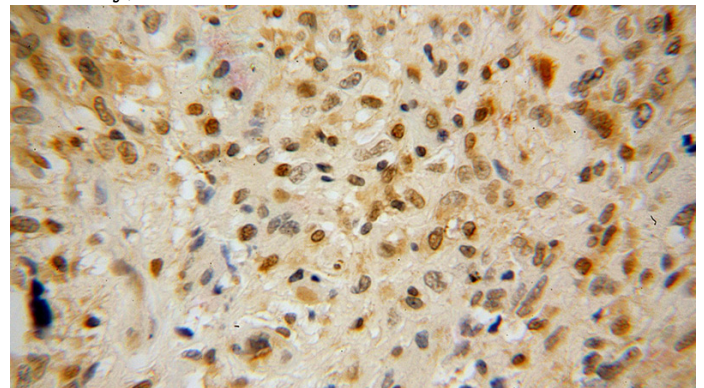
Recommended Dilution:

WB: 1:500-1:5000

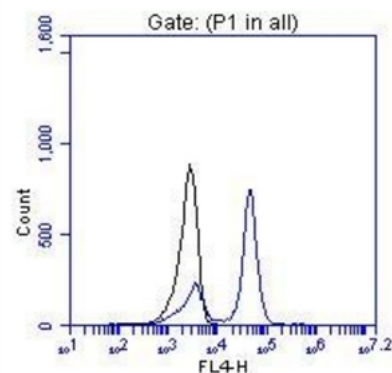
Validations



Y79 cells were subjected to SDS PAGE followed by western blot with Catalog No:113519(OTX2 antibody) at dilution of 1:500



Immunohistochemical of paraffin-embedded human gliomas using Catalog No:113519(OTX2 antibody) at dilution of 1:100 (under 40x lens)



FC result of anti-OTX2 (Catalog No:113519, 1:100) with hESC which spontaneous

OTX2 antibody

Catalog Number: 113519

differentiation toward retinal lineage (RPE).
(Black: control; Blue OTX2).

IP Result of anti-OTX2 (IP:Catalog No:113519,
3ug; Detection:Catalog No:113519 1:1500) with
Y79 cells lysate 2400ug.

