

OSTF1 antibody

Catalog Number: 113508

Product name

OSTF1 antibody

Specificity

human, mouse, rat; other species not tested.

Antibody description

OSTF1 Rabbit Polyclonal antibody. Positive IHC detected in human breast cancer. Observed molecular weight by Western-blot: 28kd

Preparation

This antibody was obtained by immunization of OSTF1 recombinant protein (Accession Number: XM_006717053). Purification method: Antigen affinity purified.

Formulation

PBS with 0.1% sodium azide and 50% glycerol pH 7.3.

Storage

Store at -20°C. DO NOT ALIQUOT

Clonality

Polyclonal

Ig Type

Rabbit IgG

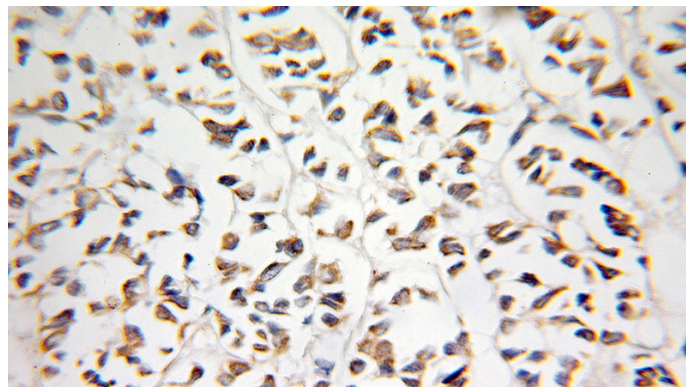
Applications

ELISA, IHC

Dilutions

Recommended Dilution:

IHC: 1:20-1:200

Validations

Immunohistochemical of paraffin-embedded human breast cancer using Catalog No:113508(OSTF1 antibody) at dilution of 1:100 (under 25x lens)