

Osteopontin antibody



Catalog Number: 113506

Product name

Osteopontin antibody

WB: 1:500-1:5000

IHC: 1:20-1:200

Specificity

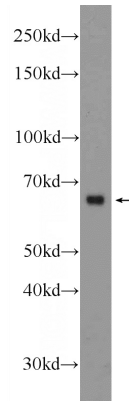
Human, Mouse; other species not tested.

IF: 1:20-1:200

Antibody description

Osteopontin Rabbit Polyclonal antibody. Positive WB detected in mouse kidney tissue, HEK-293 cells, HepG2 cells, Jurkat cells. Positive IF detected in HepG2 cells. Positive IHC detected in human stomach cancer tissue, human colon cancer tissue. Observed molecular weight by Western-blot: 66 kDa

Validations



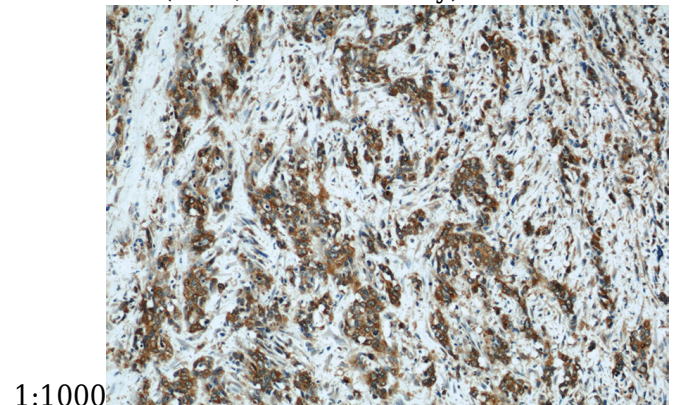
Preparation

This antibody was obtained by immunization of Osteopontin recombinant protein (Accession Number: NM_000582). Purification method: Antigen affinity purified.

mouse kidney tissue were subjected to SDS PAGE followed by western blot with Catalog No:113506(OPN, SPP1 Antibody) at dilution of

Formulation

PBS with 0.02% sodium azide and 50% glycerol pH 7.3.



Storage

Store at -20°C. DO NOT ALIQUOT

Clonality

Polyclonal

Immunohistochemical of paraffin-embedded human stomach cancer using Catalog No:113506(OPN, SPP1 antibody) at dilution of 1:50 (under 10x lens)

Ig Type

Rabbit IgG

Immunohistochemical of paraffin-embedded human stomach cancer using Catalog No:113506(OPN, SPP1 antibody) at dilution of 1:50 (under 40x lens)

Applications

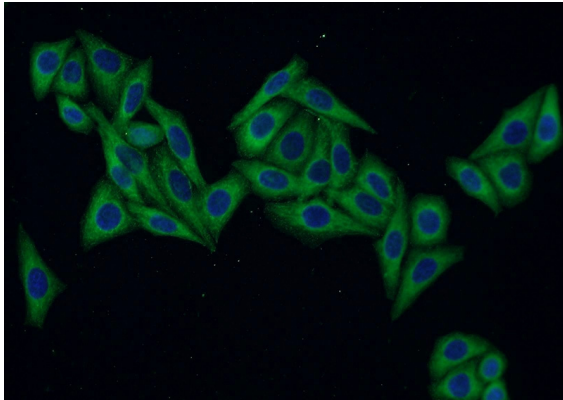
ELISA, IHC, WB, IF

Dilutions

Recommended Dilution:

Osteopontin antibody

Catalog Number: 113506



Immunofluorescent analysis of HepG2 cells using Catalog No:113506(OPN, SPP1 Antibody) at dilution of 1:50 and Alexa Fluor 488-conjugated AffiniPure Goat Anti-Rabbit IgG(H+L)