

PAK6 antibody

Catalog Number: 113501

Product name

PAK6 antibody

Specificity

Human, Mouse, Rat; other species not tested.

Antibody description

PAK6 Rabbit Polyclonal antibody. Positive WB detected in PC-3 cells, HEK-293 cells, human brain tissue, human liver tissue, mouse testis tissue, Raji cells. Positive IP detected in mouse testis tissue. Positive IHC detected in human prostate cancer tissue. Positive IF detected in HEK-293 cells. Observed molecular weight by Western-blot: 60 kDa

Preparation

This antibody was obtained by immunization of PAK6 recombinant protein (Accession Number: NM_001276717). Purification method: Antigen affinity purified.

Formulation

PBS with 0.02% sodium azide and 50% glycerol pH 7.3.

Storage

Store at -20°C. DO NOT ALIQUOT

Clonality

Polyclonal

Ig Type

Rabbit IgG

Applications

ELISA, WB, IHC, IF, IP

Dilutions

Recommended Dilution:

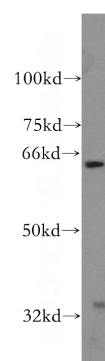
WB: 1:500-1:5000

IP: 1:200-1:1000

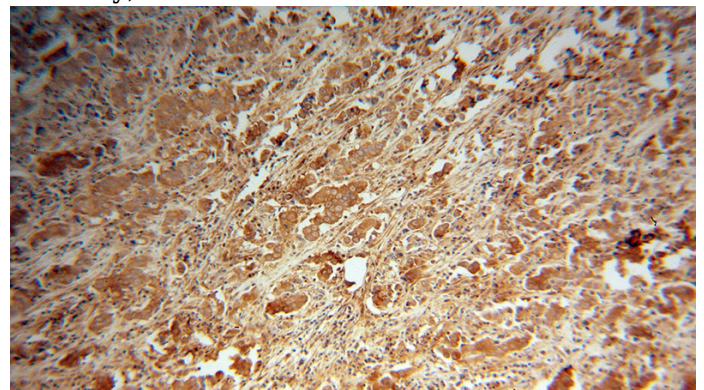
IHC: 1:20-1:200

IF: 1:20-1:200

Validations



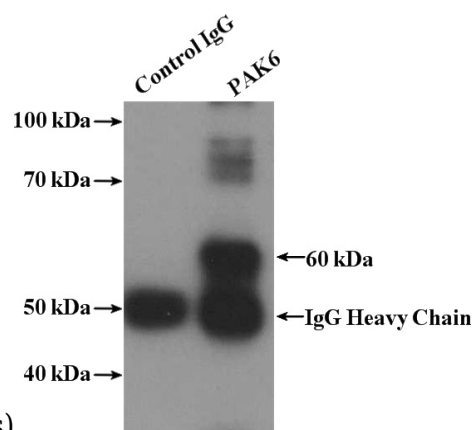
PC-3 cells were subjected to SDS PAGE followed by western blot with Catalog No:113501 (PAK6 antibody) at dilution of 1:400



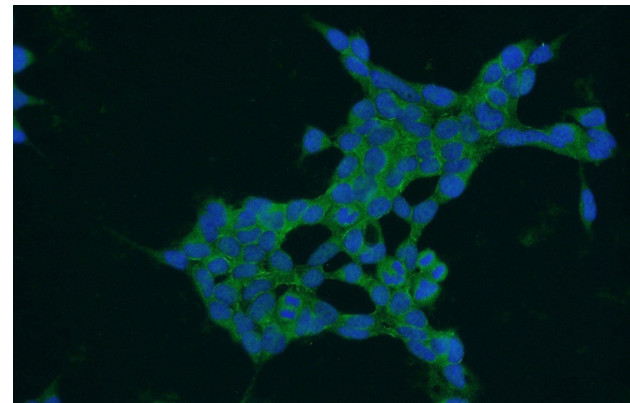
Immunohistochemical of paraffin-embedded human prostate cancer using Catalog No:113501 (PAK6 antibody) at dilution of 1:100

PAK6 antibody

Catalog Number: 113501



(under 10x lens)



Immunofluorescent analysis of HEK-293 cells using Catalog No:113501(PAK6 Antibody) at dilution of 1:50 and Alexa Fluor 488-conjugated AffiniPure Goat Anti-Rabbit IgG(H+L)

IP Result of anti-PAK6 (IP:Catalog No:113501, 4ug; Detection:Catalog No:113501 1:300) with mouse testis tissue lysate 4000ug.