

PAK4 antibody

Catalog Number: 113500

Product name

PAK4 antibody

Specificity

Human, Mouse, Rat; other species not tested.

Antibody description

PAK4 Rabbit Polyclonal antibody. Positive IF detected in Hela cells. Positive IHC detected in human prostate cancer tissue. Positive FC detected in HeLa cells. Positive WB detected in COLO 320 cells, HeLa cells, PC-3 cells, rat skin tissue. Positive IP detected in mouse liver tissue. Observed molecular weight by Western-blot: 64 kDa

Preparation

This antibody was obtained by immunization of PAK4 recombinant protein (Accession Number: XM_047438038). Purification method: Antigen affinity purified.

Formulation

PBS with 0.02% sodium azide and 50% glycerol pH 7.3.

Storage

Store at -20°C. DO NOT ALIQUOT

Clonality

Polyclonal

Ig Type

Rabbit IgG

Applications

ELISA, WB, IHC, IF, FC, IP

Dilutions

Recommended Dilution:

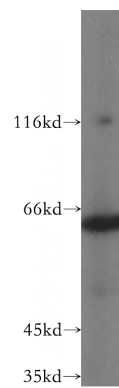
WB: 1:500-1:5000

IP: 1:200-1:2000

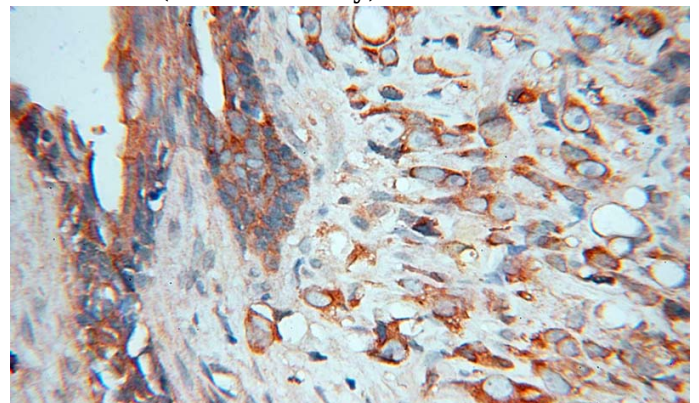
IHC: 1:20-1:200

IF: 1:10-1:100

Validations



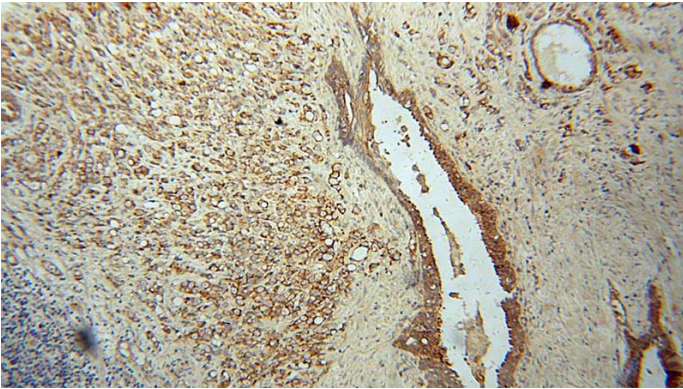
COLO 320 cells were subjected to SDS PAGE followed by western blot with Catalog No:113500(PAK4 antibody) at dilution of 1:800



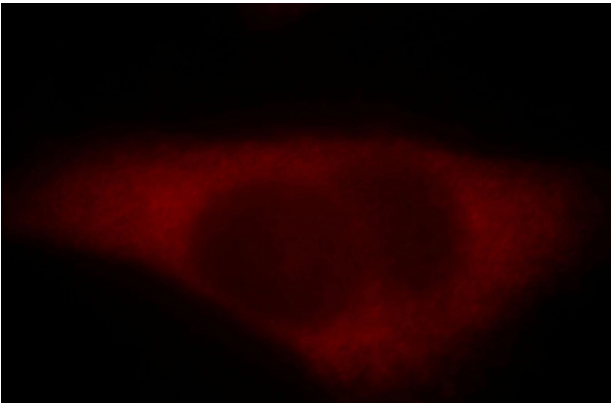
Immunohistochemical of paraffin-embedded human prostate cancer using Catalog No:113500(PAK4 antibody) at dilution of 1:100 (under 40x lens)

PAK4 antibody

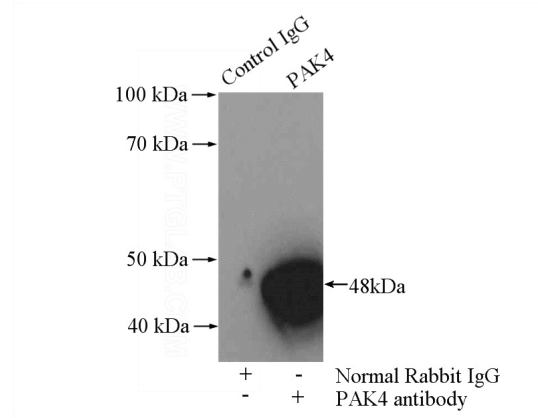
Catalog Number: 113500



Immunohistochemical of paraffin-embedded human prostate cancer using Catalog No:113500(PAK4 antibody) at dilution of 1:100 (under 10x lens)



Immunofluorescent analysis of HeLa cells, using PAK4 antibody Catalog No:113500 at 1:25 dilution and Rhodamine-labeled goat anti-rabbit IgG (red).



IP Result of anti-PAK4 (IP:Catalog No:113500, 4ug; Detection:Catalog No:113500 1:800) with mouse liver tissue lysate 4000ug.

1×10^6 HeLa cells were stained with 0.2ug PAK4 antibody (Catalog No:113500, red) and control antibody (blue). Fixed with 90% MeOH blocked with 3% BSA (30 min). Alexa Fluor 488-conjugated AffiniPure Goat Anti-Rabbit IgG(H+L) with dilution 1:1000.