

PAK1 antibody

Catalog Number: 113497

Product name

PAK1 antibody

IF: 1:10-1:100

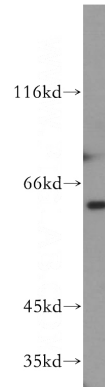
Specificity

Human; other species not tested.

Validations

Antibody description

PAK1 Rabbit Polyclonal antibody. Positive IF detected in HeLa cells. Positive IHC detected in human stomach cancer tissue. Positive WB detected in K-562 cells, A431 cells. Observed molecular weight by Western-blot: 61-65kd



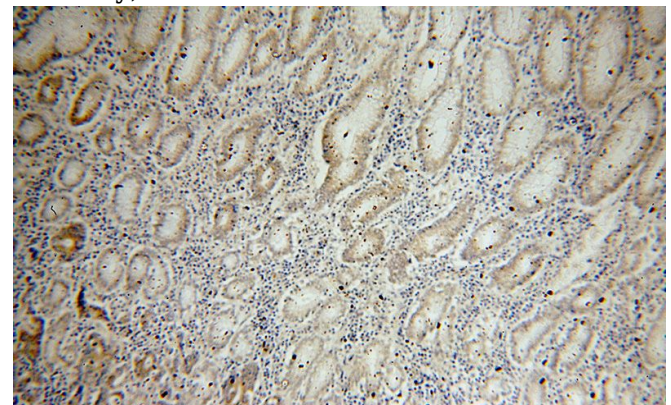
Preparation

This antibody was obtained by immunization of Peptide (Accession Number: NM_001376281). Purification method: Antigen affinity purified.

K-562 cells were subjected to SDS PAGE followed by western blot with Catalog No:113497(PAK1 antibody) at dilution of 1:400

Formulation

PBS with 0.02% sodium azide and 50% glycerol pH 7.3.



Storage

Store at -20°C. DO NOT ALIQUOT

Clonality

Polyclonal

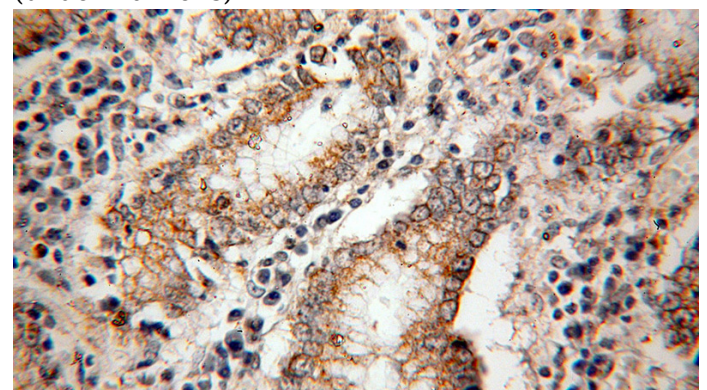
Immunohistochemical of paraffin-embedded human stomach cancer using Catalog No:113497(PAK1 antibody) at dilution of 1:100 (under 10x lens)

Ig Type

Rabbit IgG

Applications

ELISA, WB, IHC, IF



Dilutions

Recommended Dilution:

WB: 1:500-1:5000

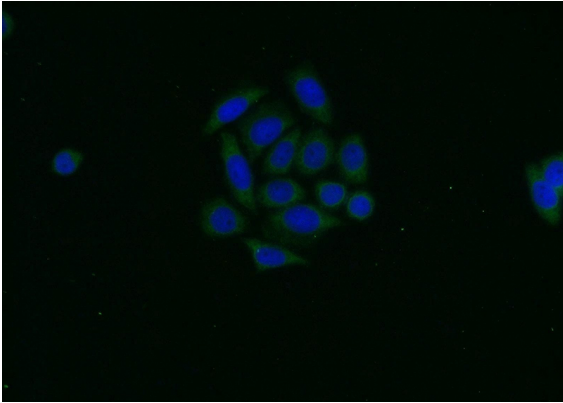
IHC: 1:20-1:200

Immunohistochemical of paraffin-embedded human stomach cancer using Catalog No:113497(PAK1 antibody) at dilution of 1:100

PAK1 antibody

Catalog Number: 113497

(under 40x lens)



Immunofluorescent analysis of HeLa cells using Catalog No:113497(PAK1 Antibody) at dilution of 1:25 and Alexa Fluor 488-conjugated AffiniPure Goat Anti-Rabbit IgG(H+L)