

PAFAH2 antibody

Catalog Number: 113488

Product name

PAFAH2 antibody

IP: 1:200-1:1000

IHC: 1:20-1:200

Specificity

Human, Mouse, Rat; other species not tested.

Antibody description

PAFAH2 Rabbit Polyclonal antibody. Positive IHC detected in human lymphoma tissue. Positive WB detected in mouse liver tissue, transfected cells, Transfected HEK-293 cells. Positive IP detected in mouse liver tissue. Observed molecular weight by Western-blot: 44-46kd

Preparation

This antibody was obtained by immunization of PAFAH2 recombinant protein (Accession Number: XM_006710670). Purification method: Antigen affinity purified.

Formulation

PBS with 0.1% sodium azide and 50% glycerol pH 7.3.

Storage

Store at -20°C. DO NOT ALIQUOT

Clonality

Polyclonal

Ig Type

Rabbit IgG

Applications

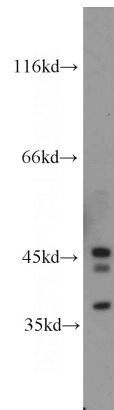
ELISA, WB, IHC, IP

Dilutions

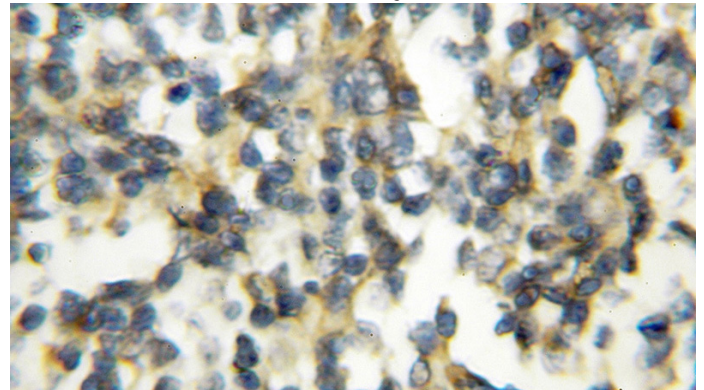
Recommended Dilution:

WB: 1:200-1:1000

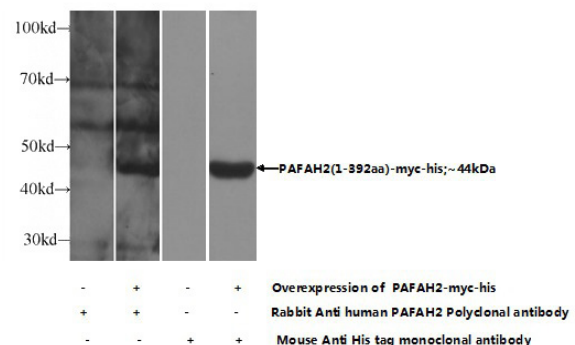
Validations



mouse liver tissue were subjected to SDS PAGE followed by western blot with Catalog No:113488(PAFAH2 antibody) at dilution of 1:300



Immunohistochemical of paraffin-embedded human lymphoma using Catalog No:113488(PAFAH2 antibody) at dilution of 1:50 (under 10x lens)



Transfected HEK-293 cells were subjected to SDS

PAFAH2 antibody

Catalog Number: 113488

PAGE followed by western blot with Catalog No:113488(PAFAH2 Antibody) at dilution of 1:800

IP Result of anti-PAFAH2 (IP:Catalog No:113488, 4ug; Detection:Catalog No:113488 1:300) with mouse liver tissue lysate 6400ug.

