

# PACSIN3 antibody



Catalog Number: 113480

## Product name

PACSIN3 antibody

Recommended Dilution:

WB: 1:200-1:2000

## Specificity

Human, Mouse, Rat; other species not tested.

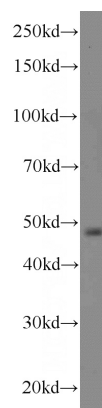
IHC: 1:20-1:200

IF: 1:10-1:100

## Antibody description

PACSIN3 Rabbit Polyclonal antibody. Positive WB detected in HeLa cells, mouse heart tissue, mouse liver tissue, mouse lung tissue, mouse skeletal muscle tissue, rat brain tissue. Positive FC detected in MCF-7 cells. Positive IHC detected in human breast cancer tissue, human heart tissue. Positive IF detected in HeLa cells. Observed molecular weight by Western-blot: 48 kDa

## Validations



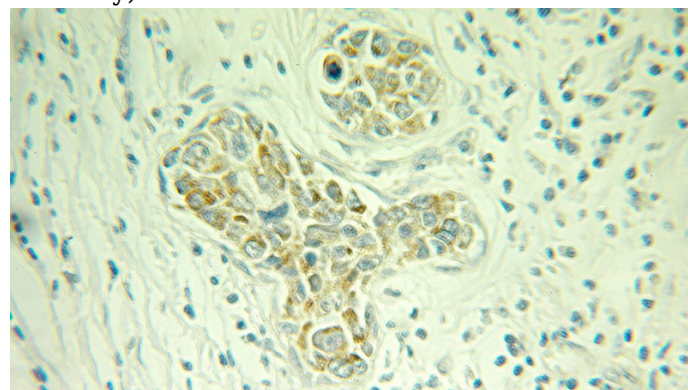
## Preparation

This antibody was obtained by immunization of PACSIN3 recombinant protein (Accession Number: XM\_047426856). Purification method: Antigen affinity purified.

HeLa cells were subjected to SDS PAGE followed by western blot with Catalog No:113480(PACSIN3 antibody) at dilution of 1:1000

## Formulation

PBS with 0.1% sodium azide and 50% glycerol pH 7.3.



## Storage

Store at -20°C. DO NOT ALIQUOT

## Clonality

Polyclonal

## Ig Type

Rabbit IgG

## Applications

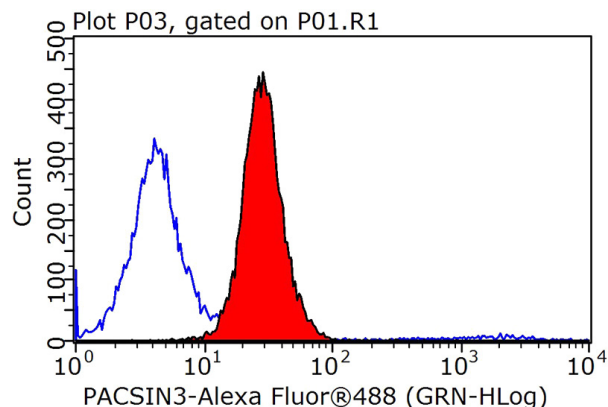
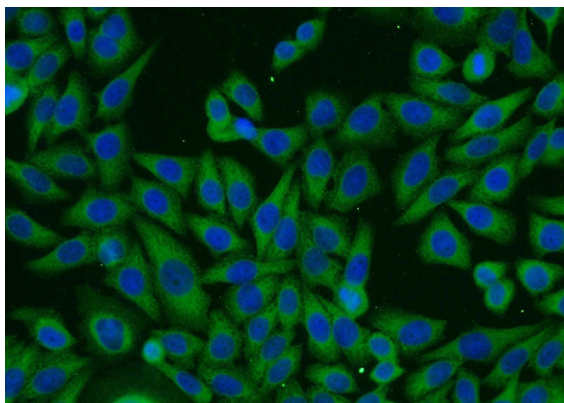
ELISA, WB, IHC, FC, IF

Immunohistochemical of paraffin-embedded human breast cancer using Catalog No:113480(PACSIN3 antibody) at dilution of 1:100 (under 25x lens)

## Dilutions

# PACSIN3 antibody

Catalog Number: 113480



Immunofluorescent analysis of HeLa cells using Catalog No:113480(PACSIN3 Antibody) at dilution of 1:25 and Alexa Fluor 488-conjugated AffiniPure Goat Anti-Rabbit IgG(H+L)

$1 \times 10^6$  MCF-7 cells were stained with 0.2ug PACSIN3 antibody (Catalog No:113480, red) and control antibody (blue). Fixed with 90% MeOH blocked with 3% BSA (30 min). Alexa Fluor 488-conjugated AffiniPure Goat Anti-Rabbit IgG(H+L) with dilution 1:1000.