

# OCT1 antibody

Catalog Number: 113469

## Product name

OCT1 antibody

WB: 1:500-1:5000

IP: 1:200-1:1000

## Specificity

Human, Pig; other species not tested.

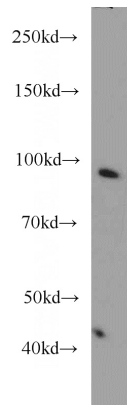
IHC: 1:20-1:200

IF: 1:10-1:100

## Antibody description

OCT1 Rabbit Polyclonal antibody. Positive IF detected in HeLa cells. Positive IHC detected in human lymphoma tissue, human colon cancer tissue. Positive IP detected in HeLa cells. Positive WB detected in HeLa cells, HEK-293 cells, NCCIT cell. Observed molecular weight by Western-blot: 90 kDa

## Validations



## Preparation

This antibody was obtained by immunization of  $\alpha$ CT1 recombinant protein (Accession Number: XM\_047422875). Purification method: Antigen affinity purified.

HeLa cells were subjected to SDS PAGE followed by western blot with Catalog No:113469(POU2F1 antibody) at dilution of 1:1000

## Formulation

PBS with 0.1% sodium azide and 50% glycerol pH 7.3.

## Storage

Store at -20°C. DO NOT ALIQUOT

## Clonality

Polyclonal

## Ig Type

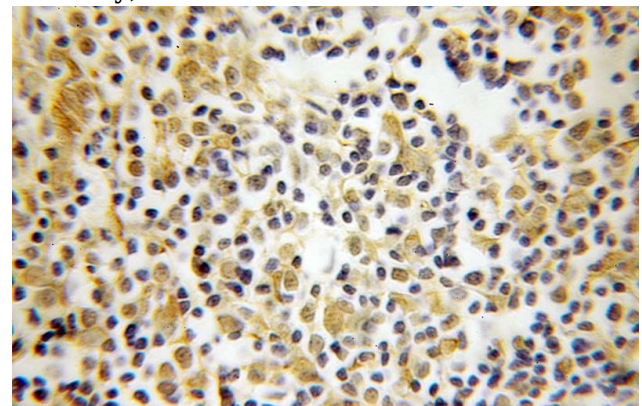
Rabbit IgG

## Applications

ELISA, WB, IHC, IF, IP

## Dilutions

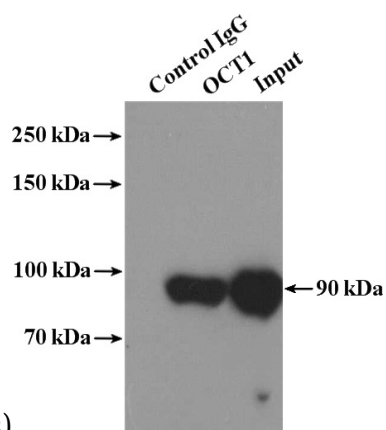
Recommended Dilution:



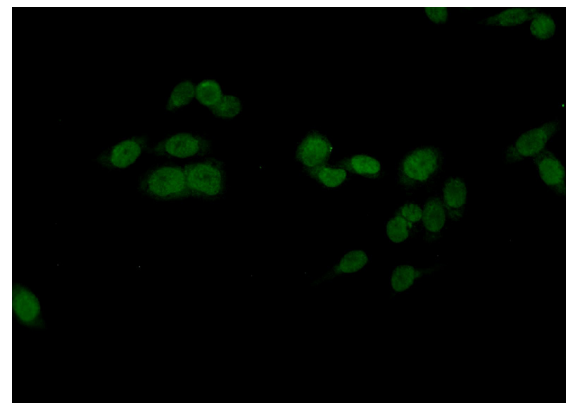
Immunohistochemical of paraffin-embedded human lymphoma using Catalog No:113469(POU2F1 antibody) at dilution of 1:100

# OCT1 antibody

Catalog Number: 113469



(under 25x lens)



Immunofluorescent analysis of HeLa cells using Catalog No:113469(POU2F1 Antibody) at dilution of 1:25 and Alexa Fluor 488-conjugated AffiniPure Goat Anti-Rabbit IgG(H+L)

IP Result of anti-POU2F1 (IP:Catalog No:113469, 4ug; Detection:Catalog No:113469 1:300) with HeLa cells lysate 1600ug.